

Meta-analyserne fortolkes således:

Hvert studie er angivet efter følgende system i forest plottene:

I plots hvor der sammenlignes med placebo:

Stofnavnet i interventionsgruppen:

FLU = Fluoxetine
LIT = Lithium
PAL = Paliperidone
OLA = Olanzapine
VAL = Valproate
LAM = Lamotrigine
ZIP = Ziprasidone
ARI = Aripiprazole
CAR = Carbamazepine
RIS = Risperidone
IMI = Imipramine
QUE = Quetiapine
OXA = Oxcarbazepine
PER = Perphenazine

Efterfulgt af et komma

Angivelse af, om stoffet er givet som add-on til anden behandling (A) eller i monoterapi (M)

Efterfulgt af et komma

Angivelse af, om studiet er beriget i forhold til interventionsstoffet (responder trial = R) eller ikke er beriget i forhold til interventionsstoffet (NR)

Efterfulgt af et komma

Angivelse af, om patienterne i studiet blev randomiseret, når remission var opnået efter en manisk (m), depressiv (d) eller både manisk og depressiv episode (b).

Efterfulgt af et komma

Førsteforfatterens efternavn samt årstal for publikation.

I plots hvor der sammenlignes med lithium:

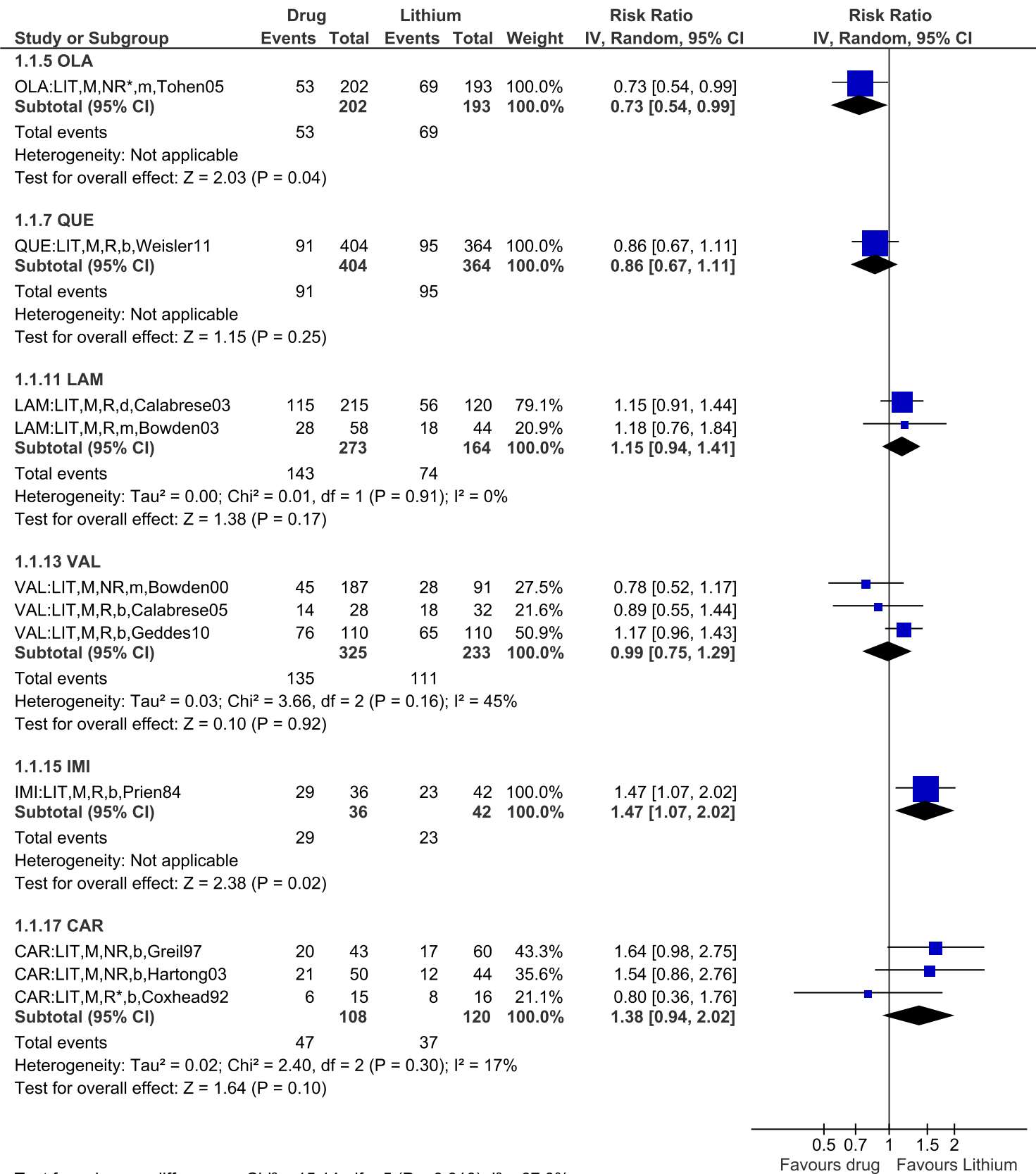
Opbygningen er næsten den samme, dog er interventionsstoffet efterfulgt af et kolon herefter sammenligningsstoffet, lithium (LIT).

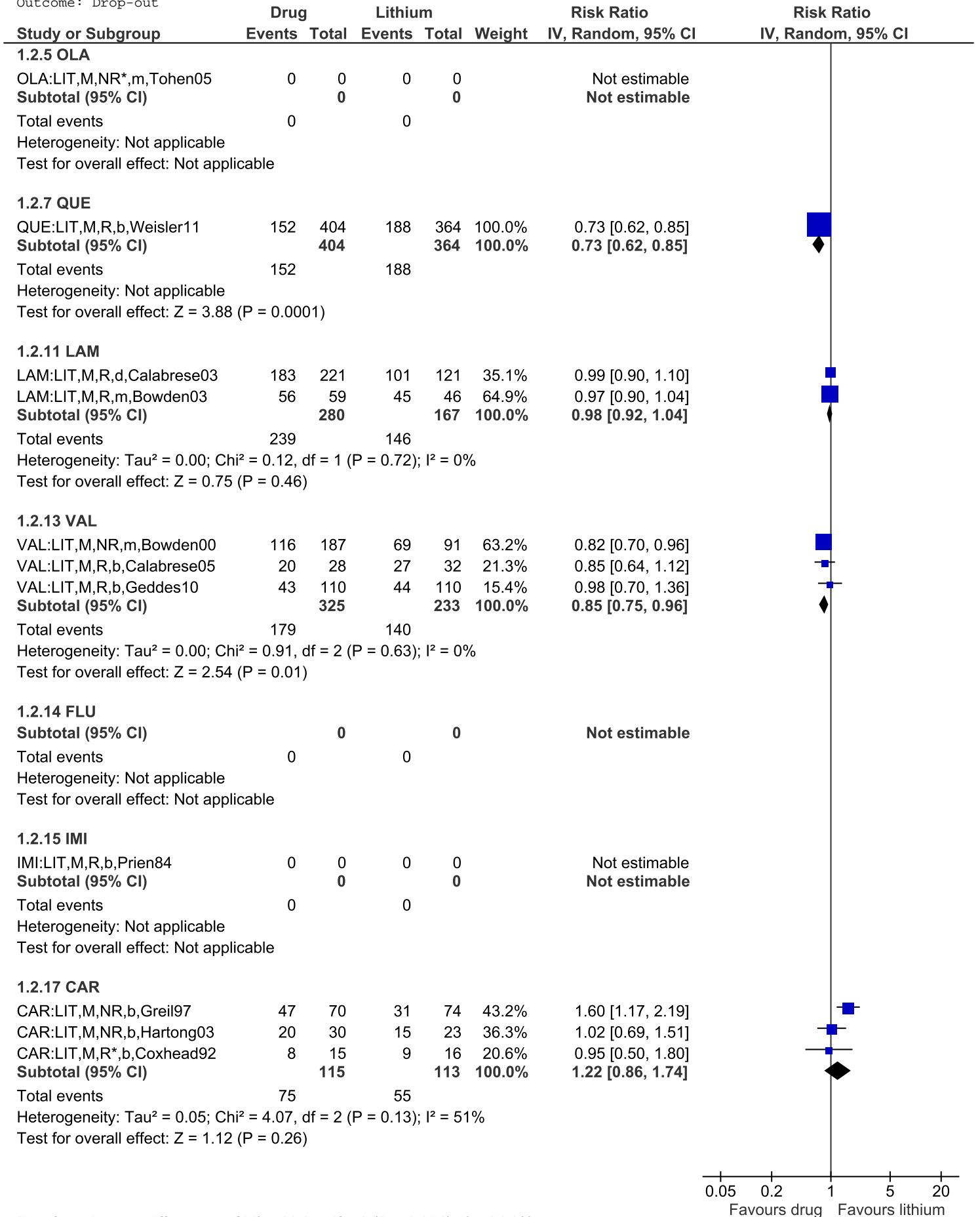
I de enkelte tilfælde, hvor der står "Not estimable", betyder det, at outcomet ikke var rapporteret i det givne studie.

Meta-analyse 1.1:

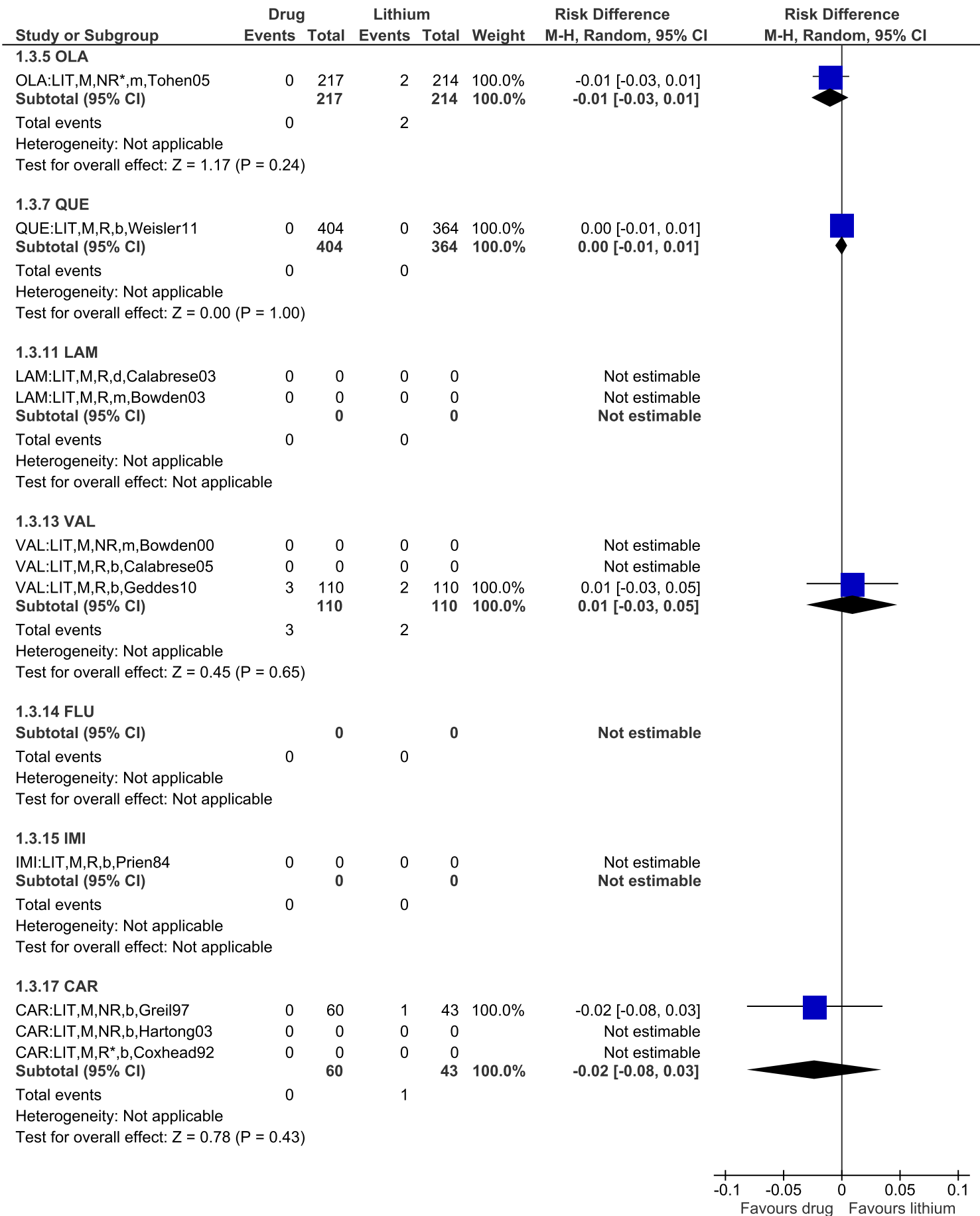
Alle stoffer vs. lithium

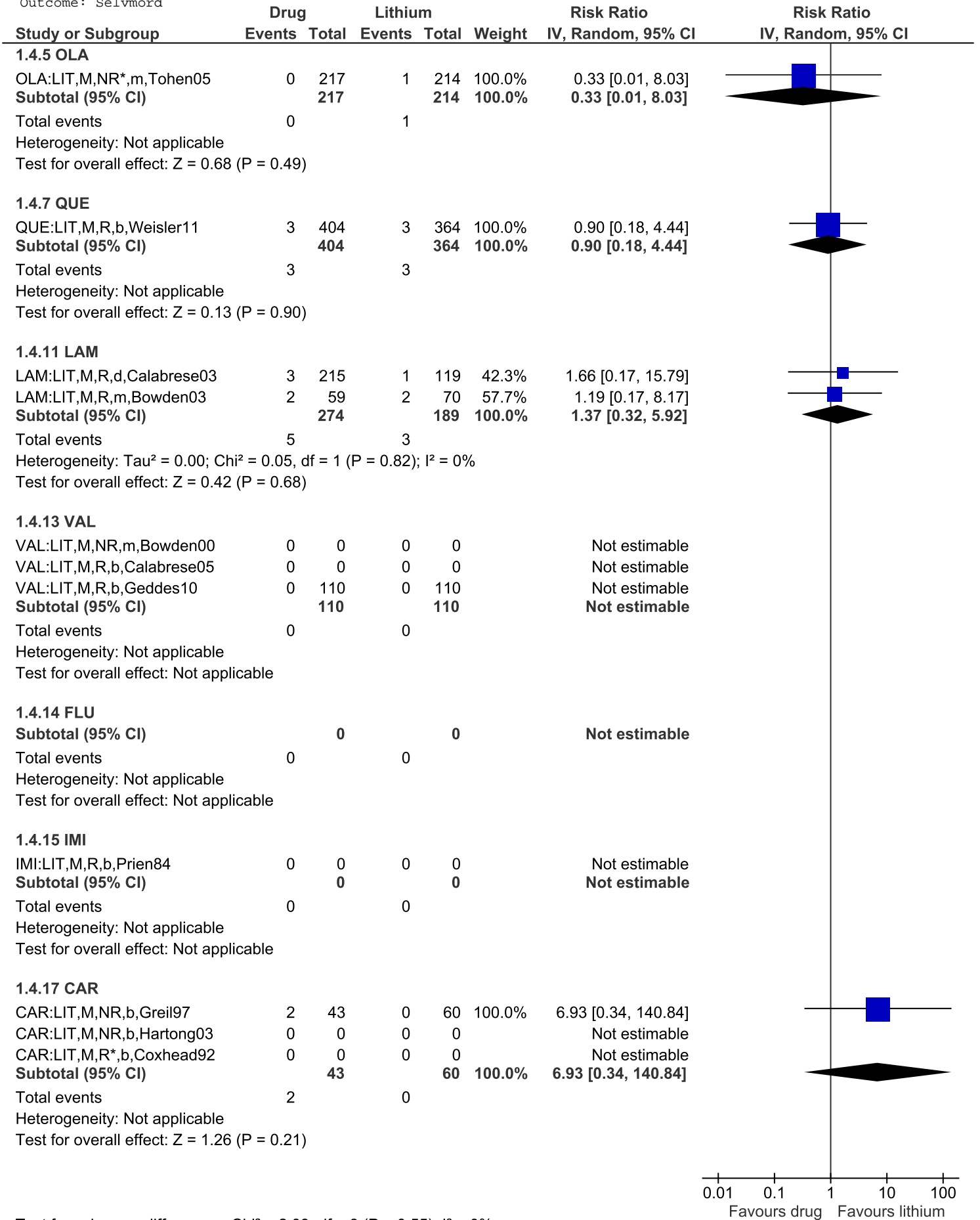
Outcome: Ny affektiv episode





Test for subgroup differences: Chi² = 16.07, df = 3 (P = 0.001), I² = 81.3%

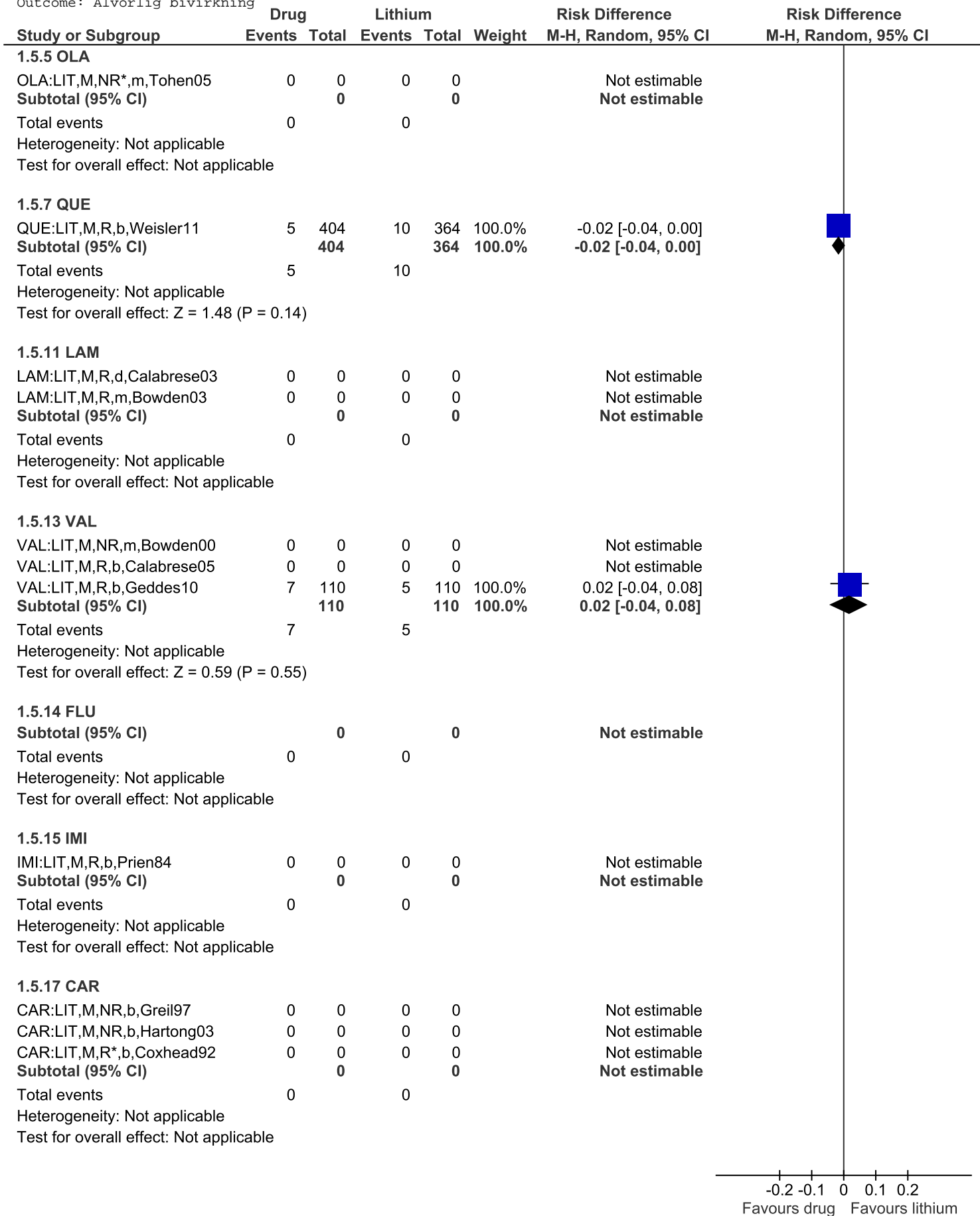




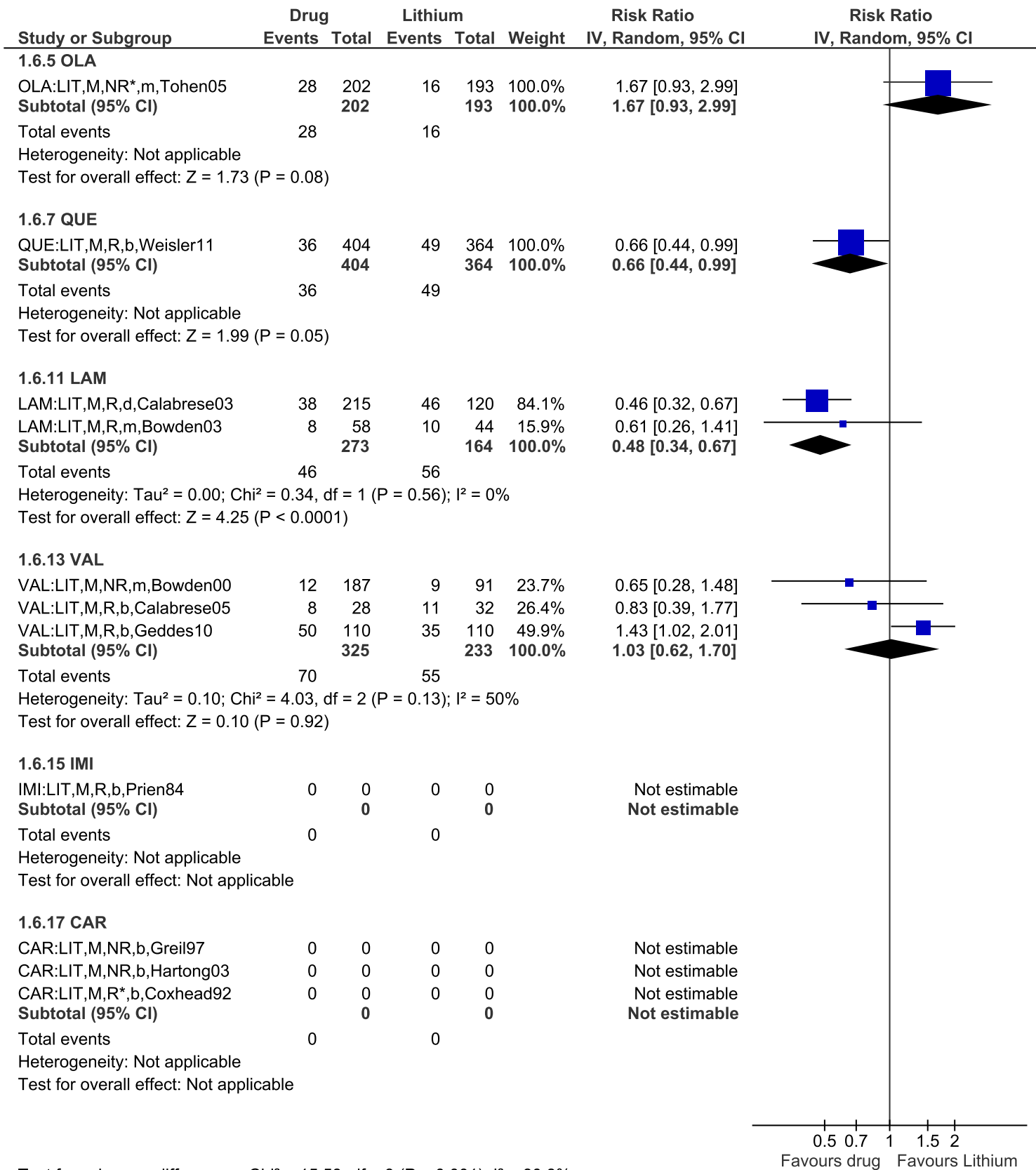
Test for subgroup differences: Chi² = 2.09, df = 3 (P = 0.55), I² = 0%

0.01 0.1 1 10 100
 Favours drug Favours lithium

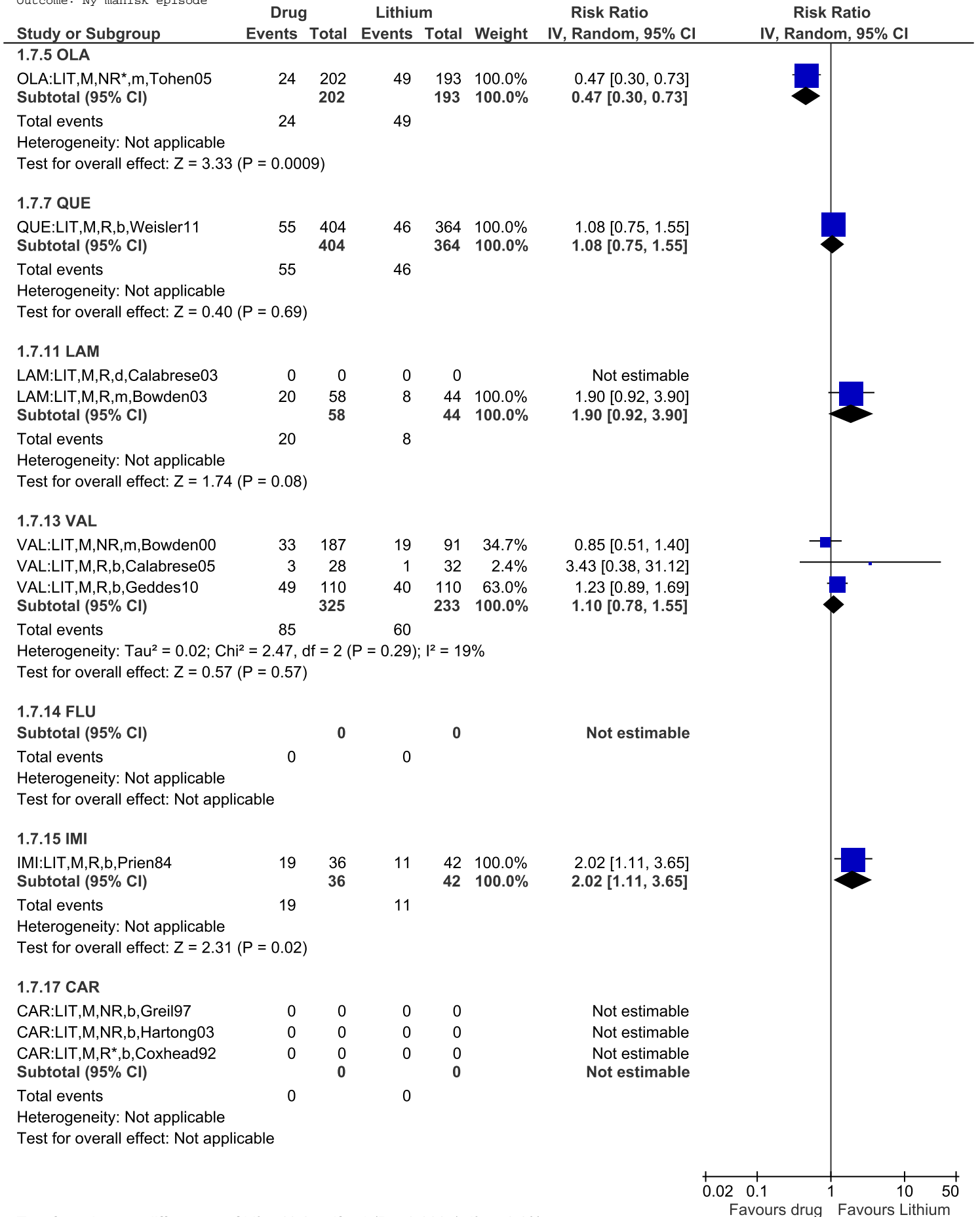
Meta-analyse 1.5:
 Alle stoffer vs. lithium
 Outcome: Alvorlig bivirkning



Meta-analyse 1.6:
 Alle stoffer vs. lithium
 Outcome: Ny depressiv episode

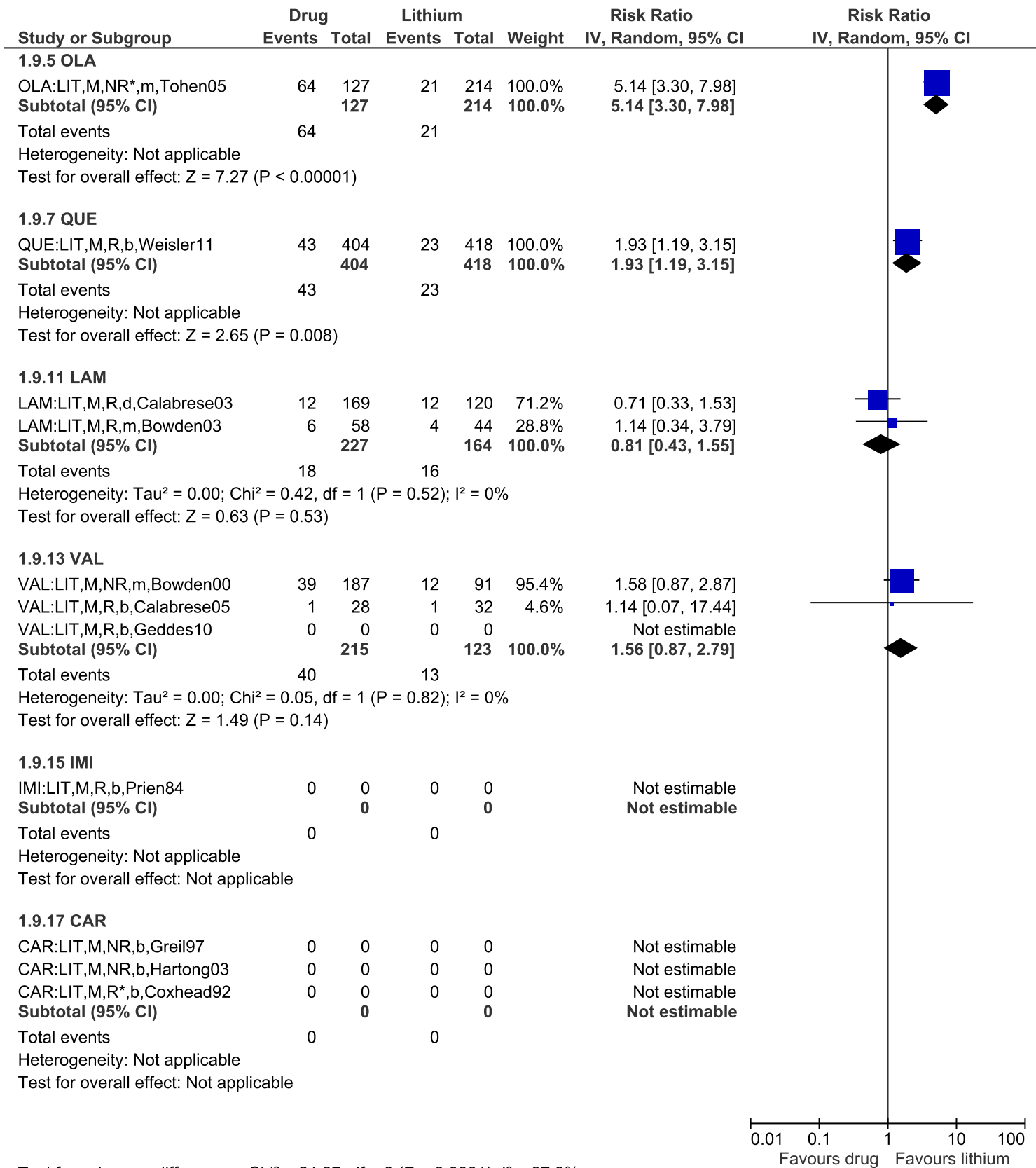


Test for subgroup differences: Chi² = 15.58, df = 3 (P = 0.001), I² = 80.8%

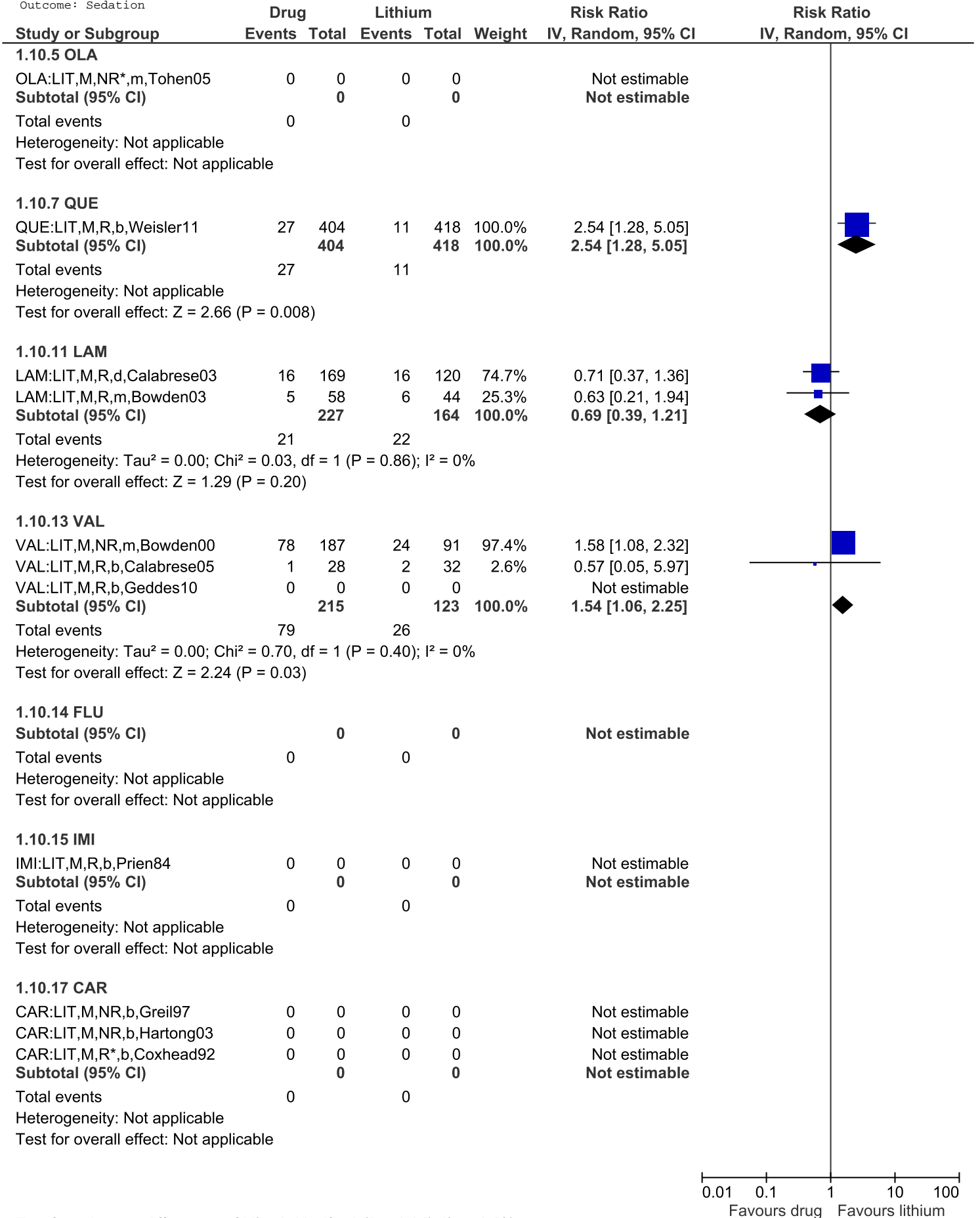


Test for subgroup differences: Chi² = 19.85, df = 4 (P = 0.0005), I² = 79.9%

Meta-analyse 1.9:
 Alle stoffer vs. lithium
 Outcome: Vægtøgning



Test for subgroup differences: Chi² = 24.87, df = 3 (P < 0.0001), I² = 87.9%

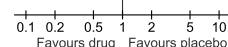
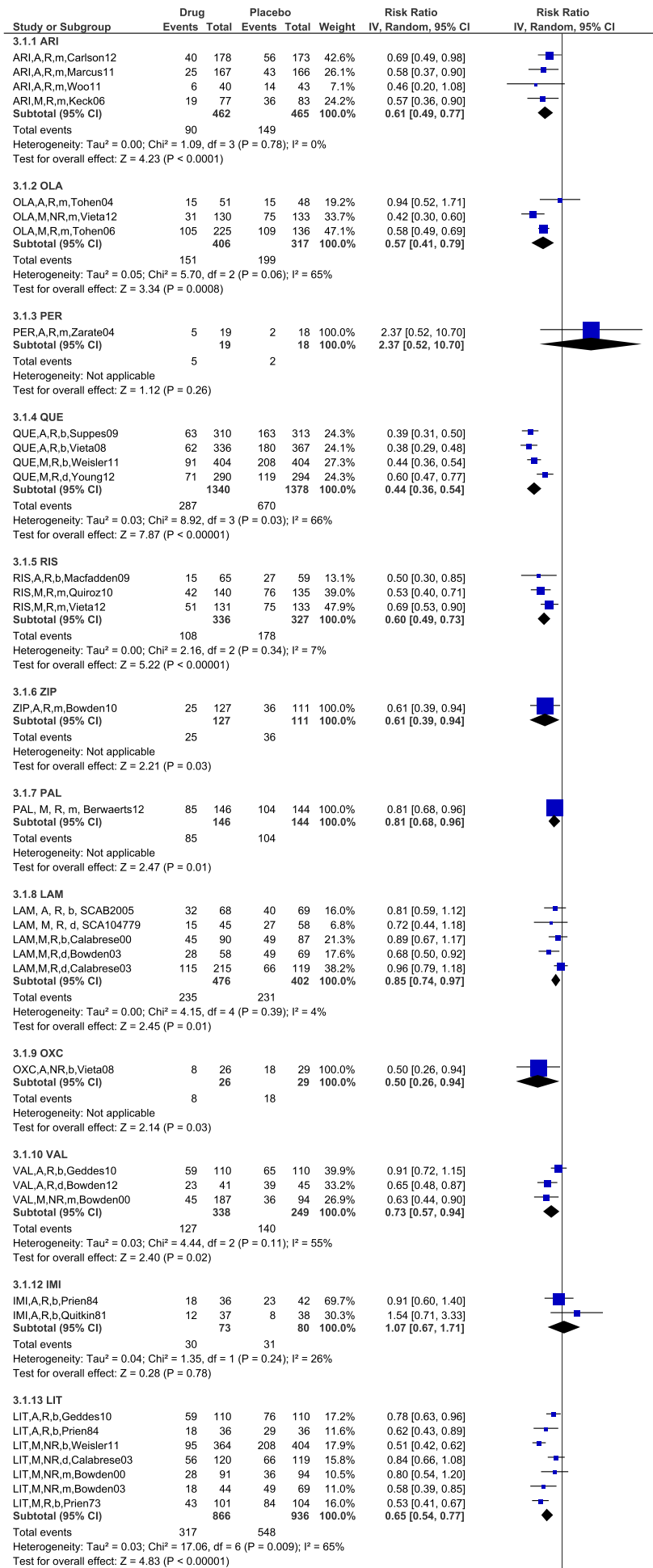


Test for subgroup differences: Chi² = 9.16, df = 2 (P = 0.01), I² = 78.2%

Meta-analyse 3.1

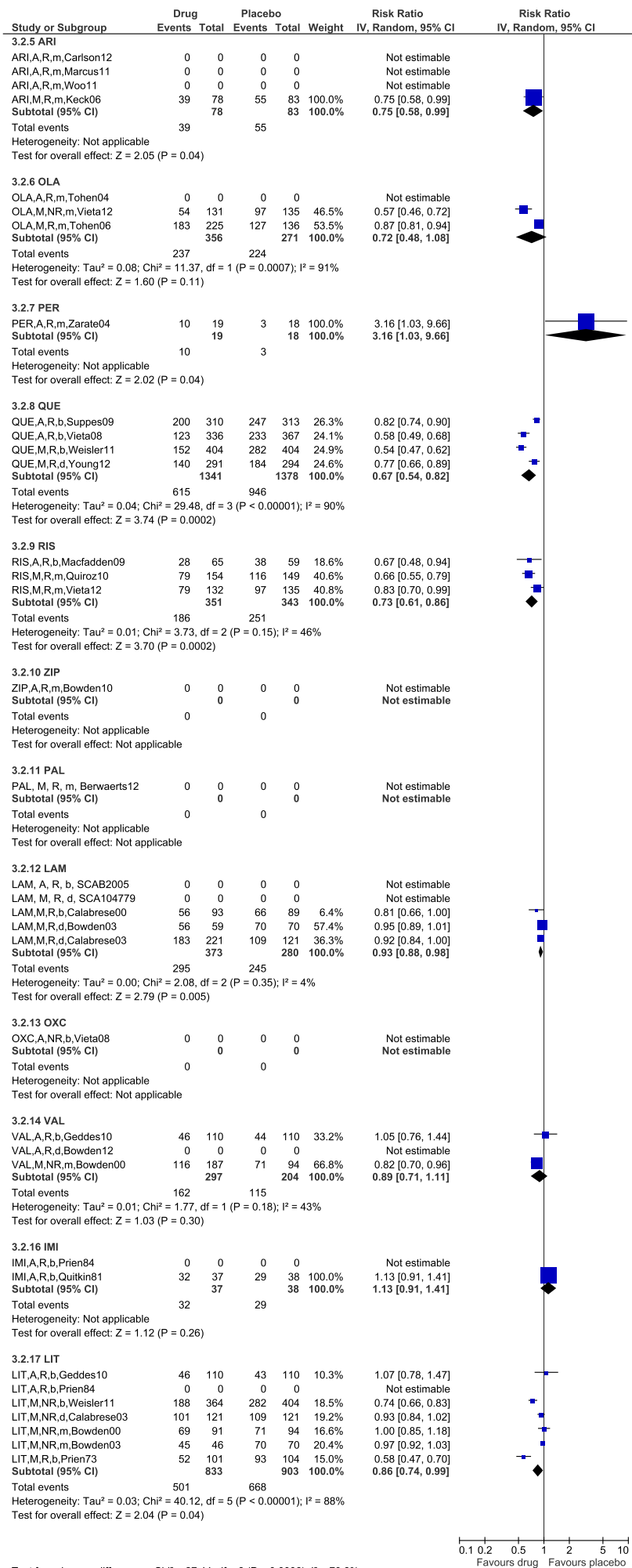
Alle stoffer vs. placebo

Outcome: Ny affektiv episode



Test for subgroup differences: Chi² = 43.44, df = 11 (P < 0.00001), I² = 74.7%

Meta-analyse 3.2:
 Alle stoffer vs. placebo
 Outcome: Drop-out



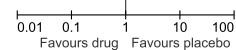
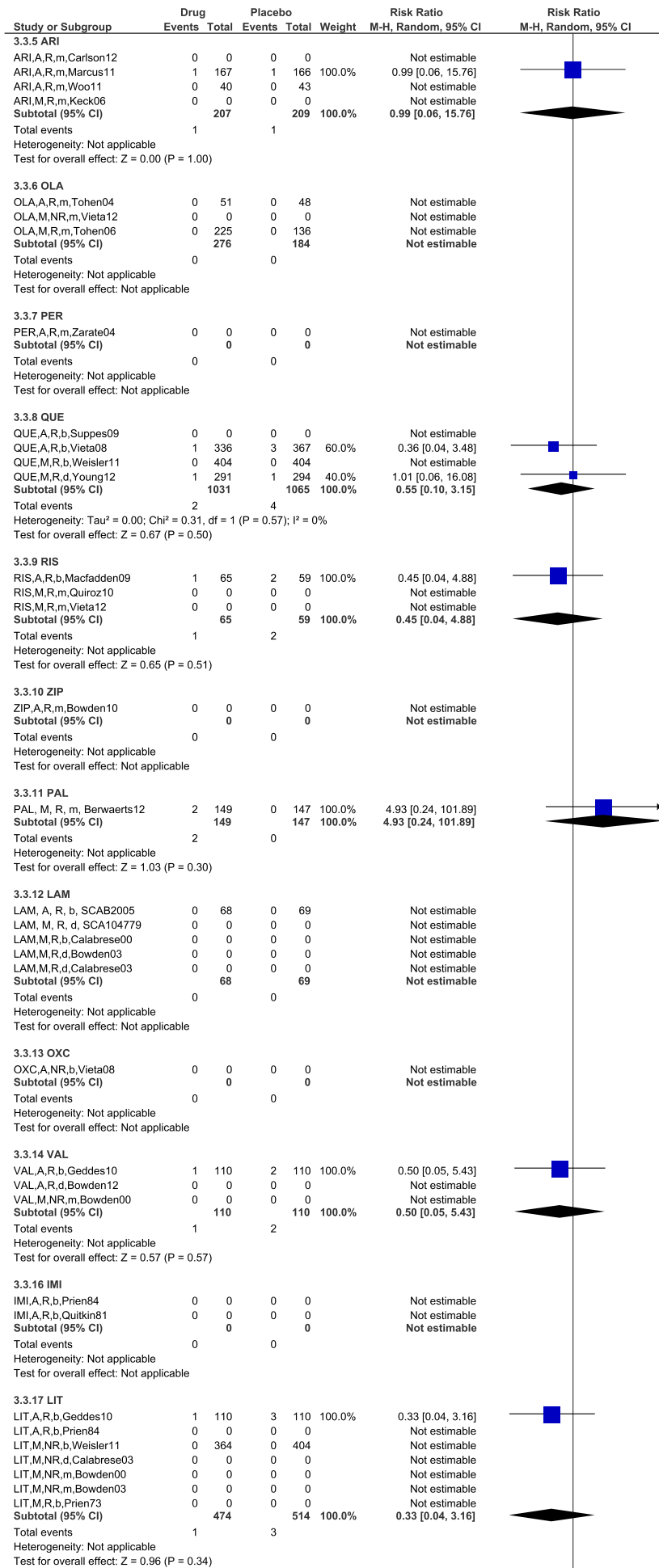
Test for subgroup differences: Chi² = 27.44, df = 8 (P = 0.0006), I² = 70.8%

0.1 0.2 0.5 1 2 5 10
 Favours drug Favours placebo

Meta-analyse 3.3:

Alle stoffer vs. placebo

Outcome: Død

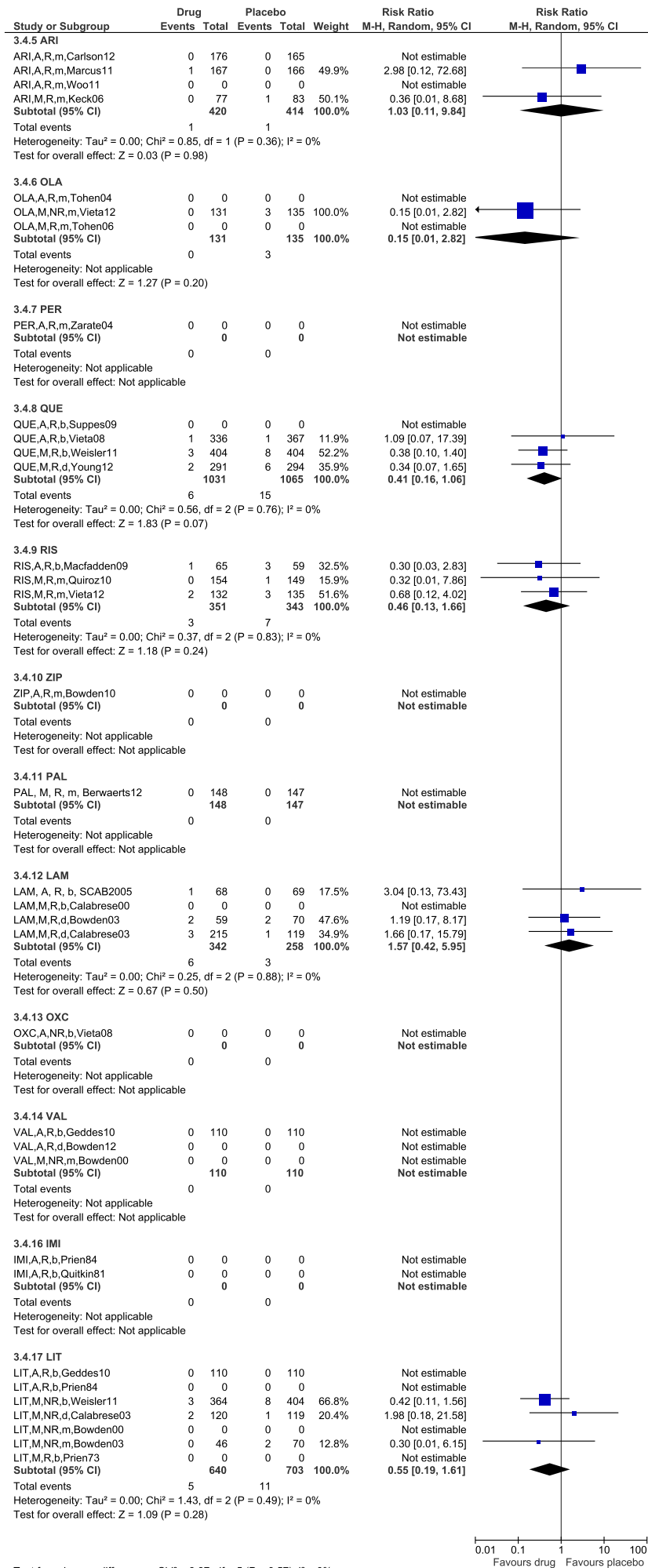


Test for subgroup differences: Chi² = 2.32, df = 5 (P = 0.80), I² = 0%

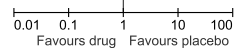
Meta-analyse 3.4:

Alle stoffer vs. placebo

Outcome: Selvmord

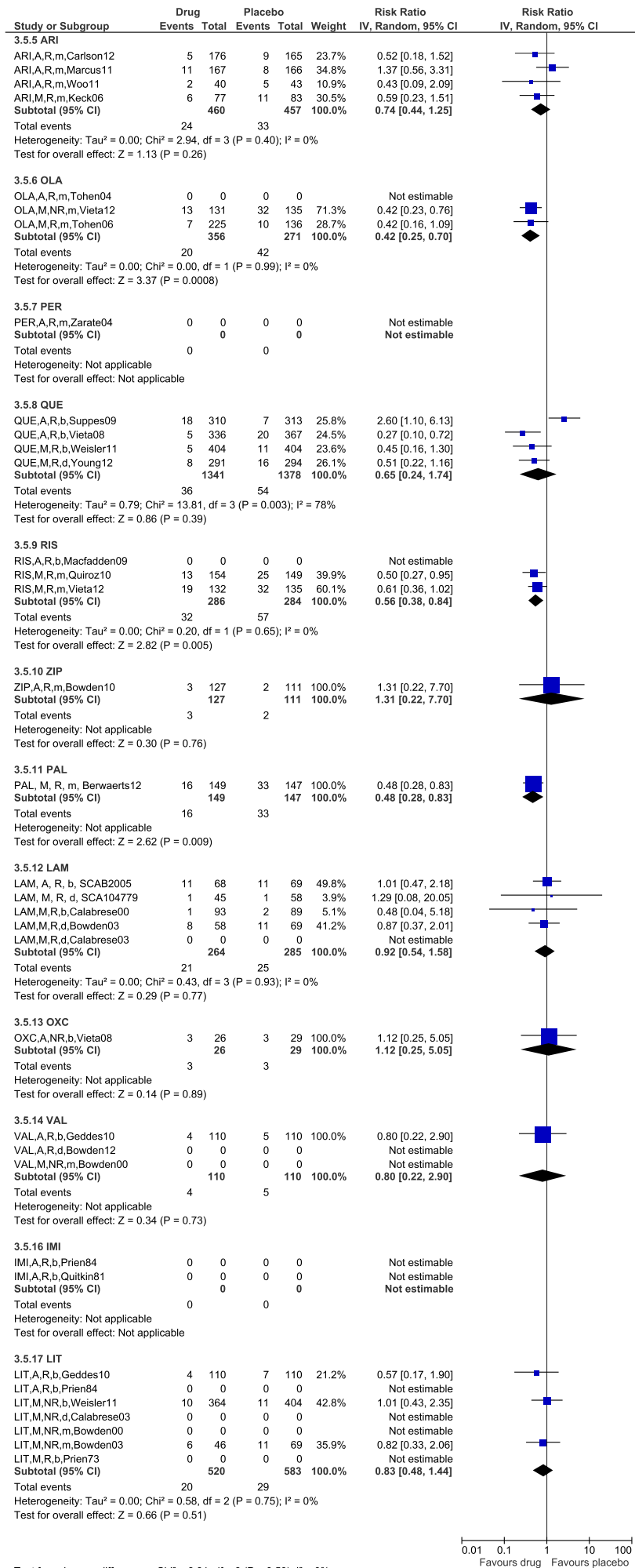


Test for subgroup differences: Chi² = 3.87, df = 5 (P = 0.57), I² = 0%

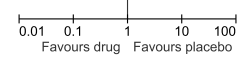


Meta-analyse 3.5:

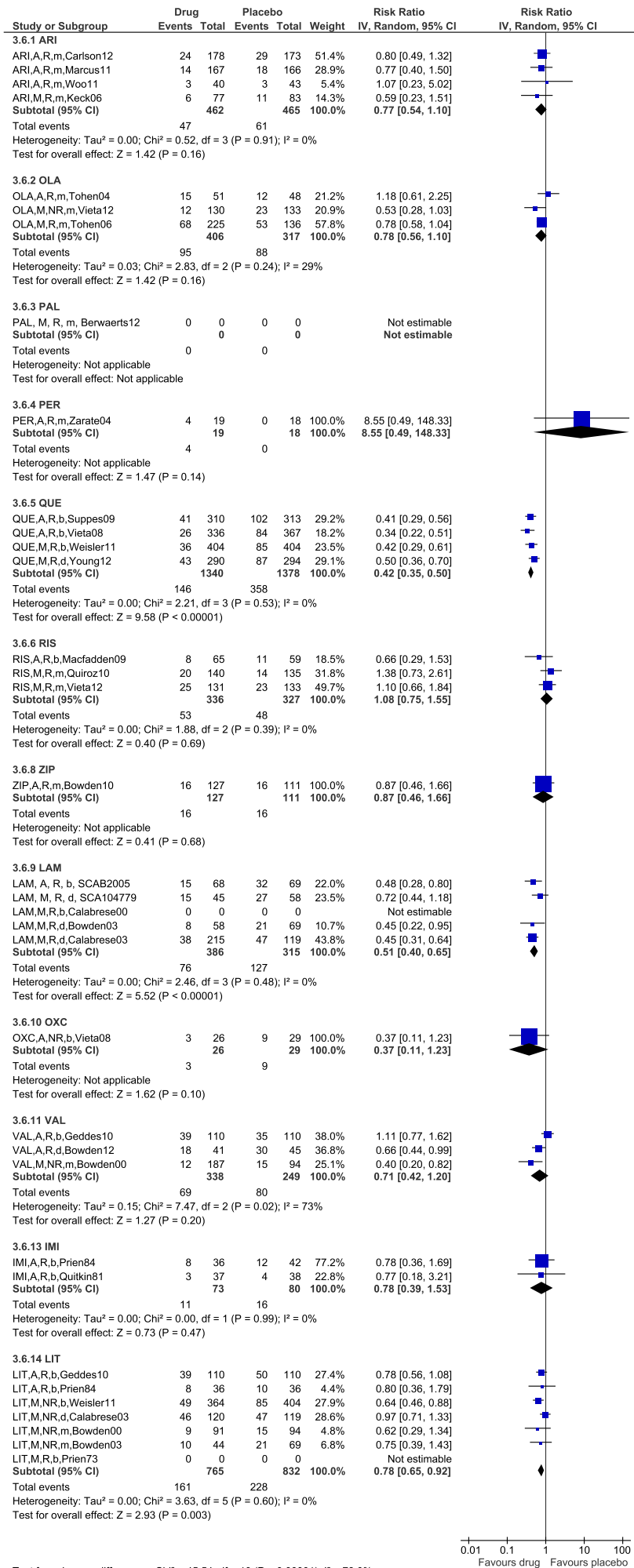
Alle stoffer vs. placebo
 Outcome: Alvorlig bivirkning



Test for subgroup differences: Chi² = 8.31, df = 9 (P = 0.50), I² = 0%



Meta-analyse 3.6:
 Alle stoffer vs. placebo
 Outcome: Ny depressiv episode

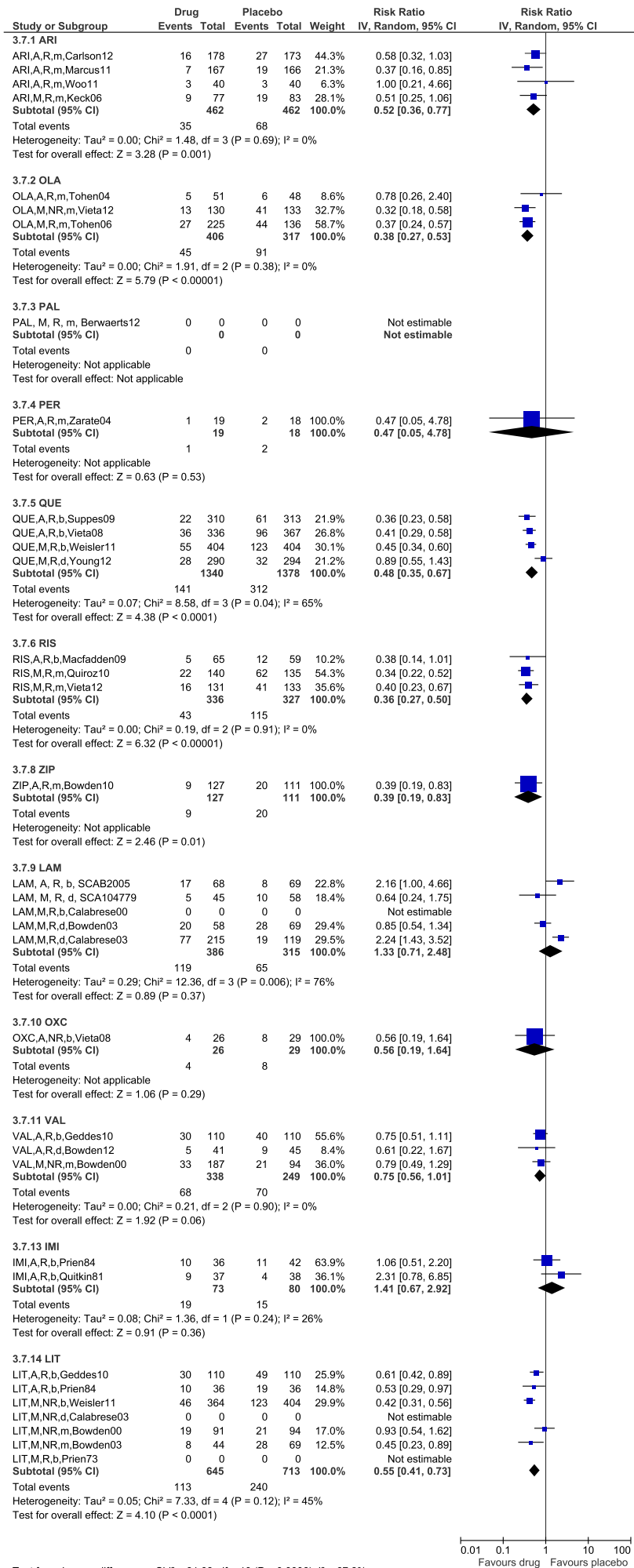


0.01 0.1 1 10 100
 Favours drug Favours placebo

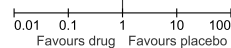
Test for subgroup differences: Chi² = 45.54, df = 10 (P < 0.00001), I² = 78.0%

Meta-analyse 3.7:

Alle stoffer vs. placebo
 Outcome: Ny manisk episode



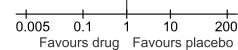
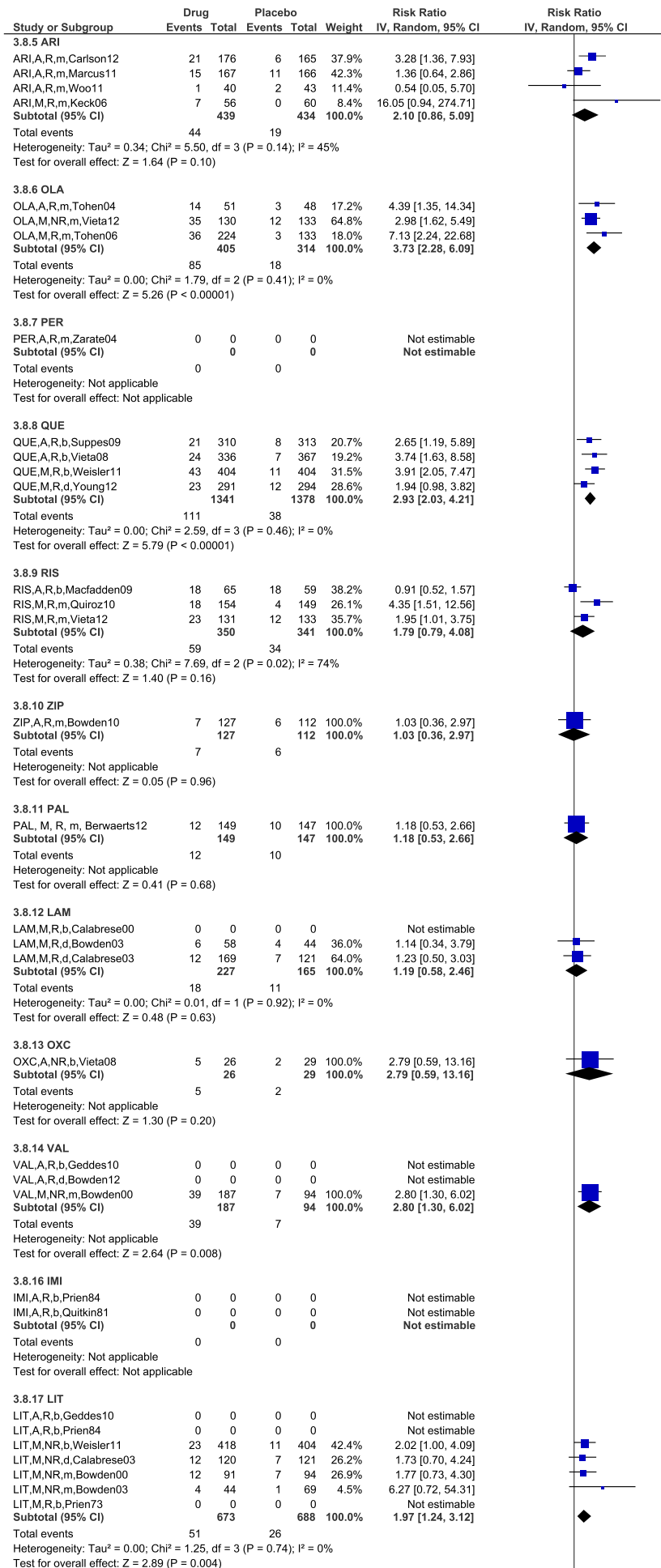
Test for subgroup differences: Chi² = 31.08, df = 10 (P = 0.0006), I² = 67.8%



Meta-analyse 3.8:

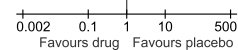
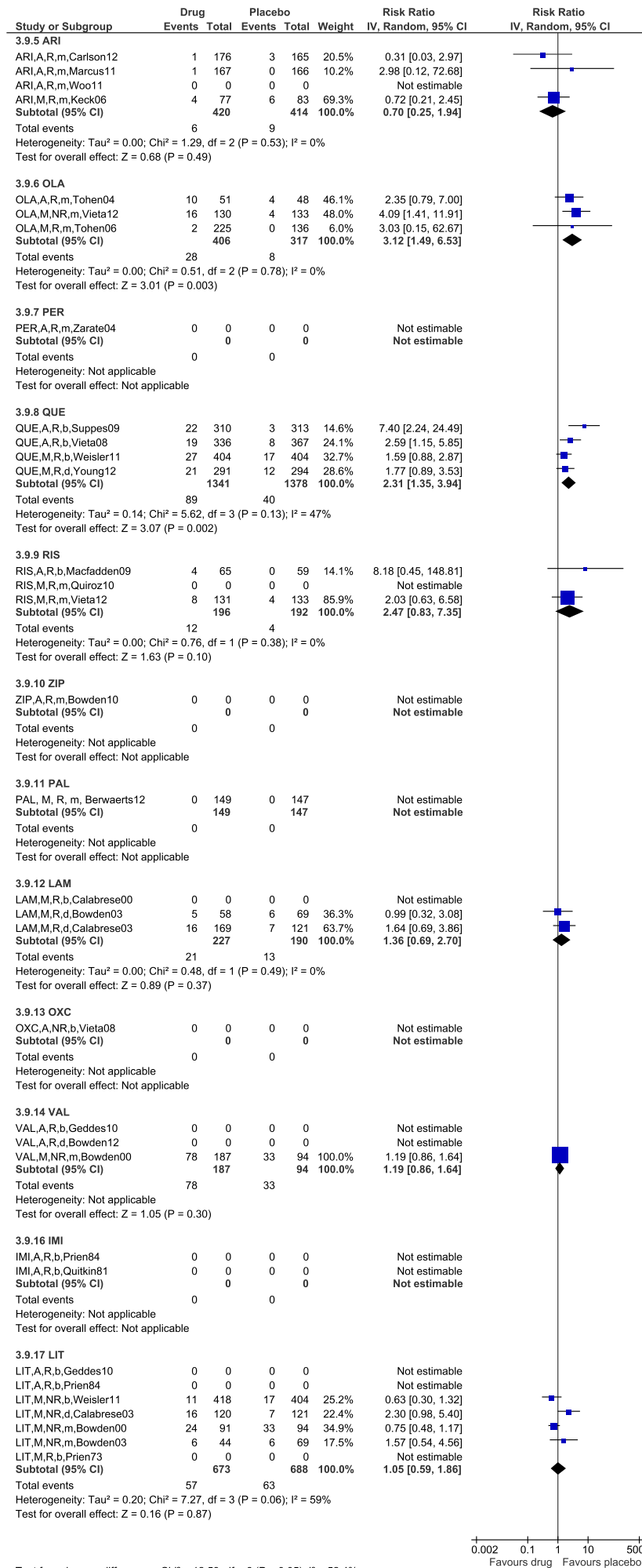
Alle stoffer vs. placebo

Outcome: Vægtøgning

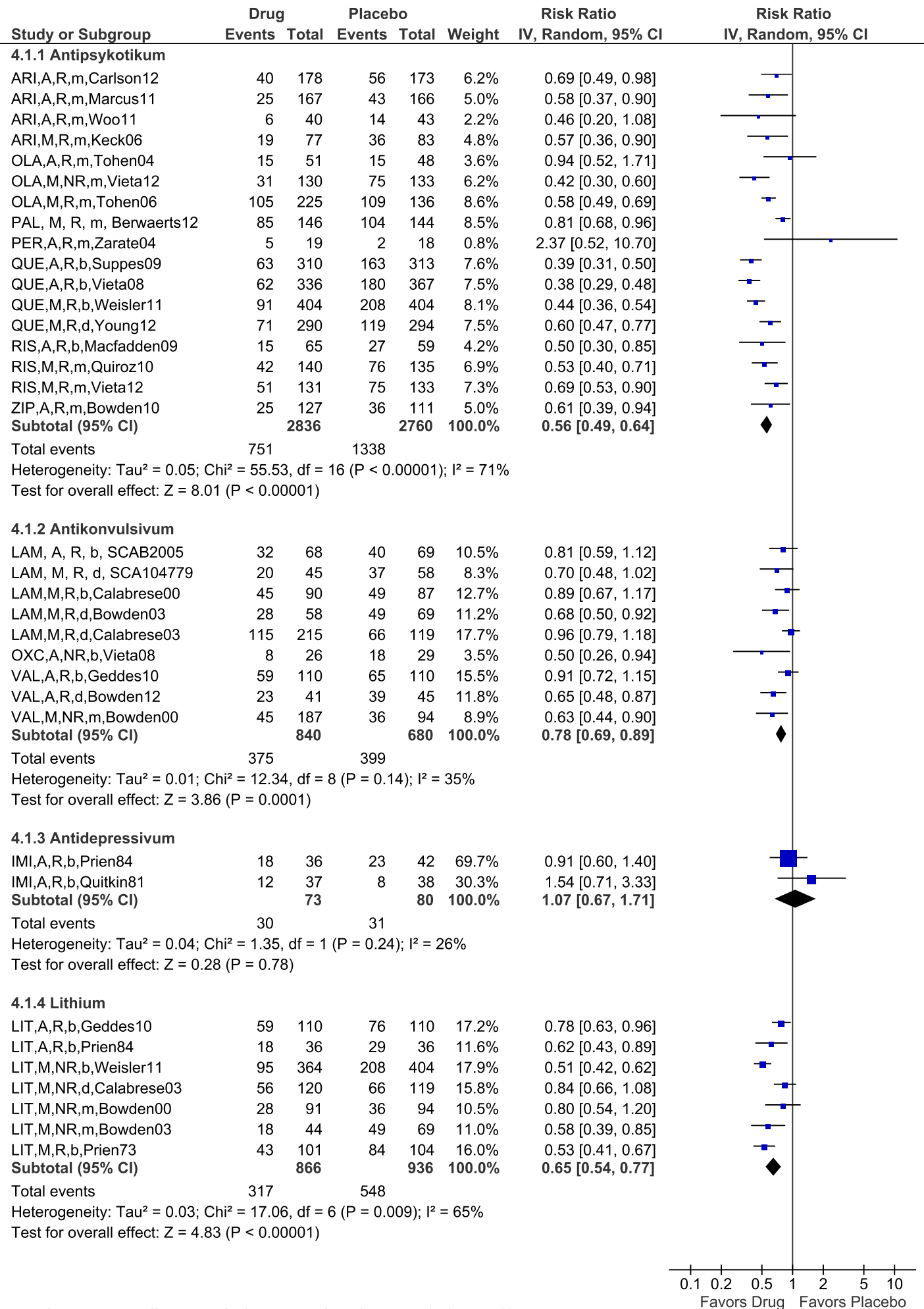


Test for subgroup differences: Chi² = 14.52, df = 9 (P = 0.10), I² = 38.0%

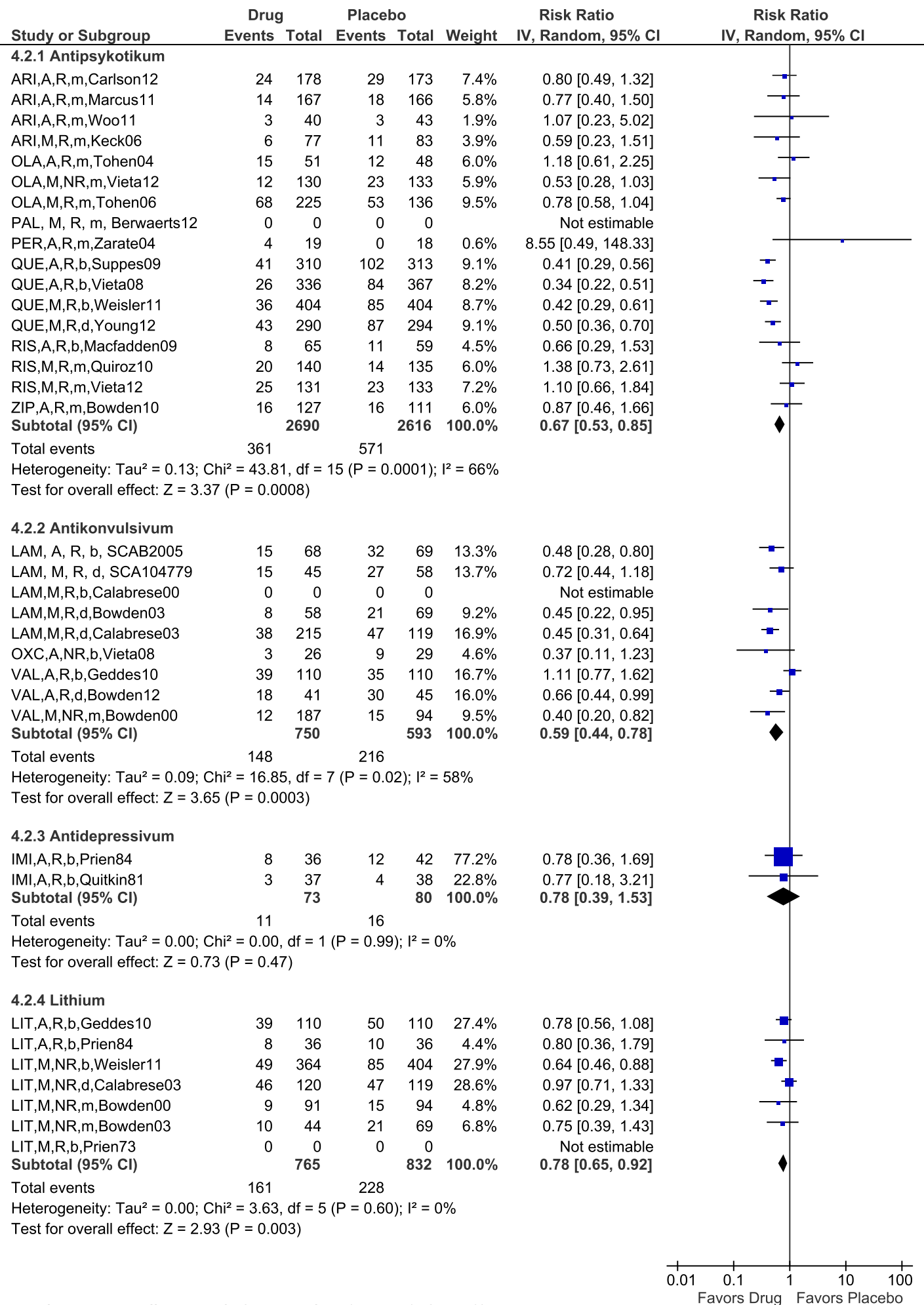
Meta-analyse 3.9:
 Alle stoffer vs. placebo
 Outcome: Sedation



Test for subgroup differences: Chi² = 12.59, df = 6 (P = 0.05), I² = 52.4%



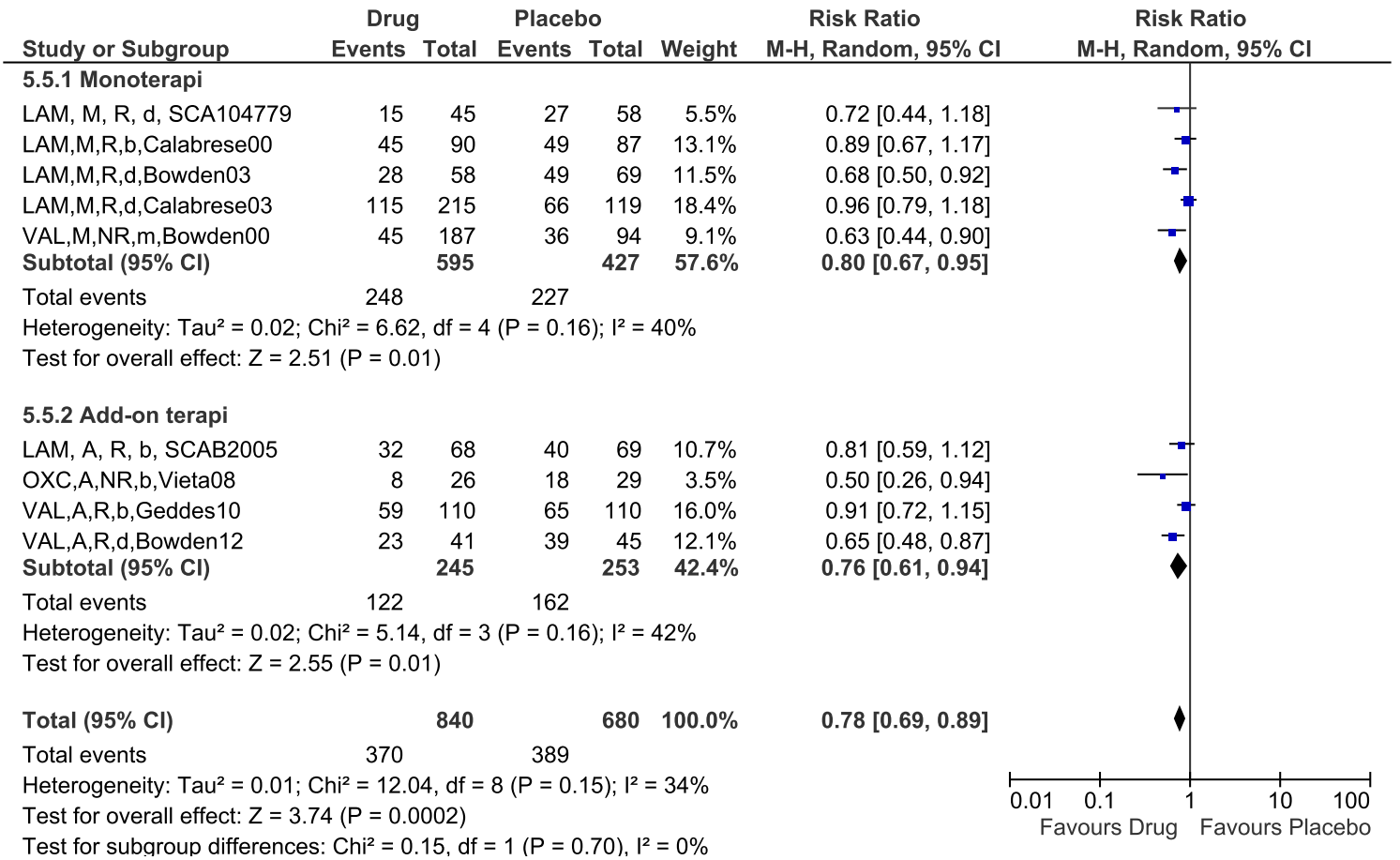
Test for subgroup differences: Chi² = 15.63, df = 3 (P = 0.001), I² = 80.8%



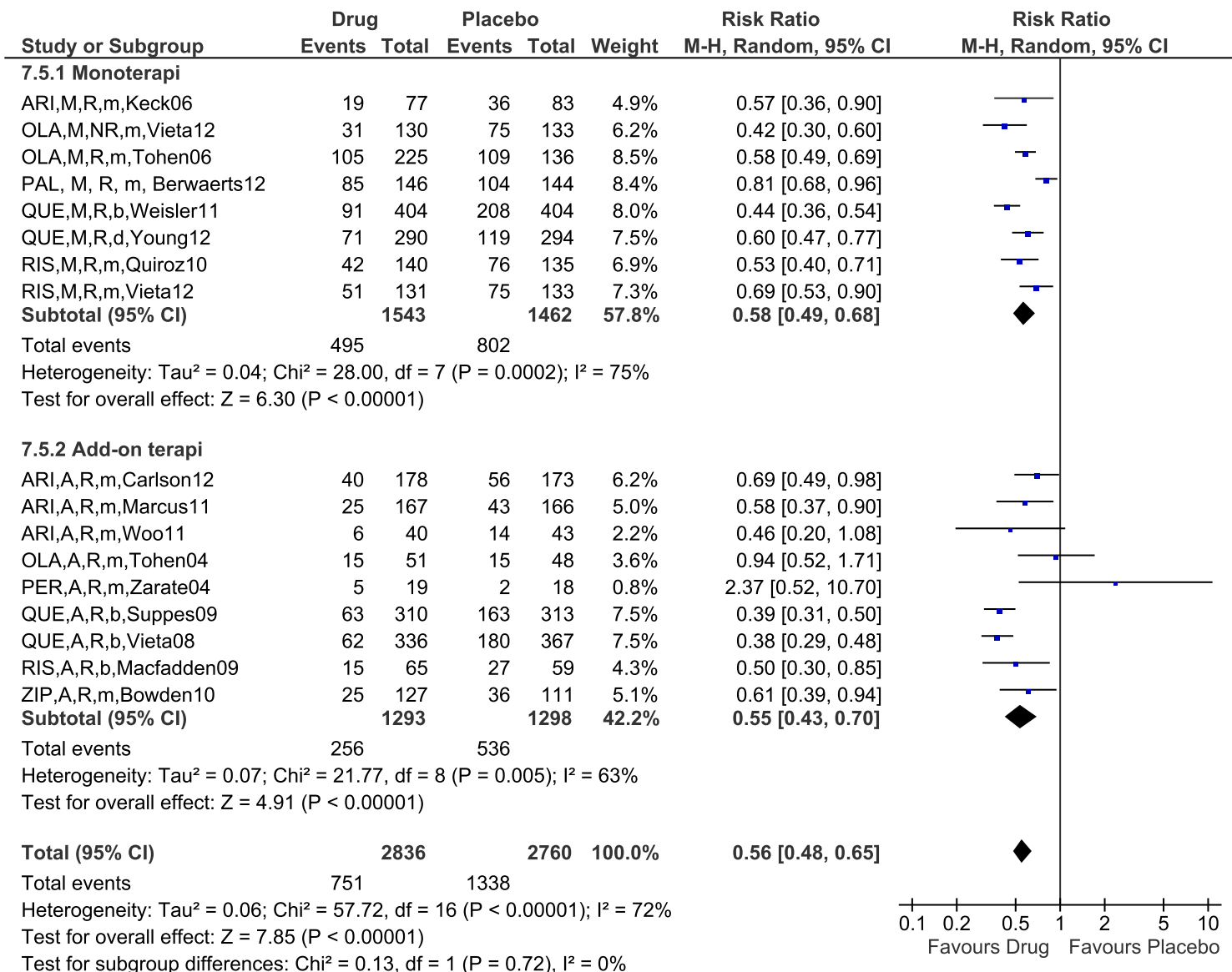
0.01 0.1 1 10 100
Favors Drug Favors Placebo

Test for subgroup differences: Chi² = 3.05, df = 3 (P = 0.38), I² = 1.6%

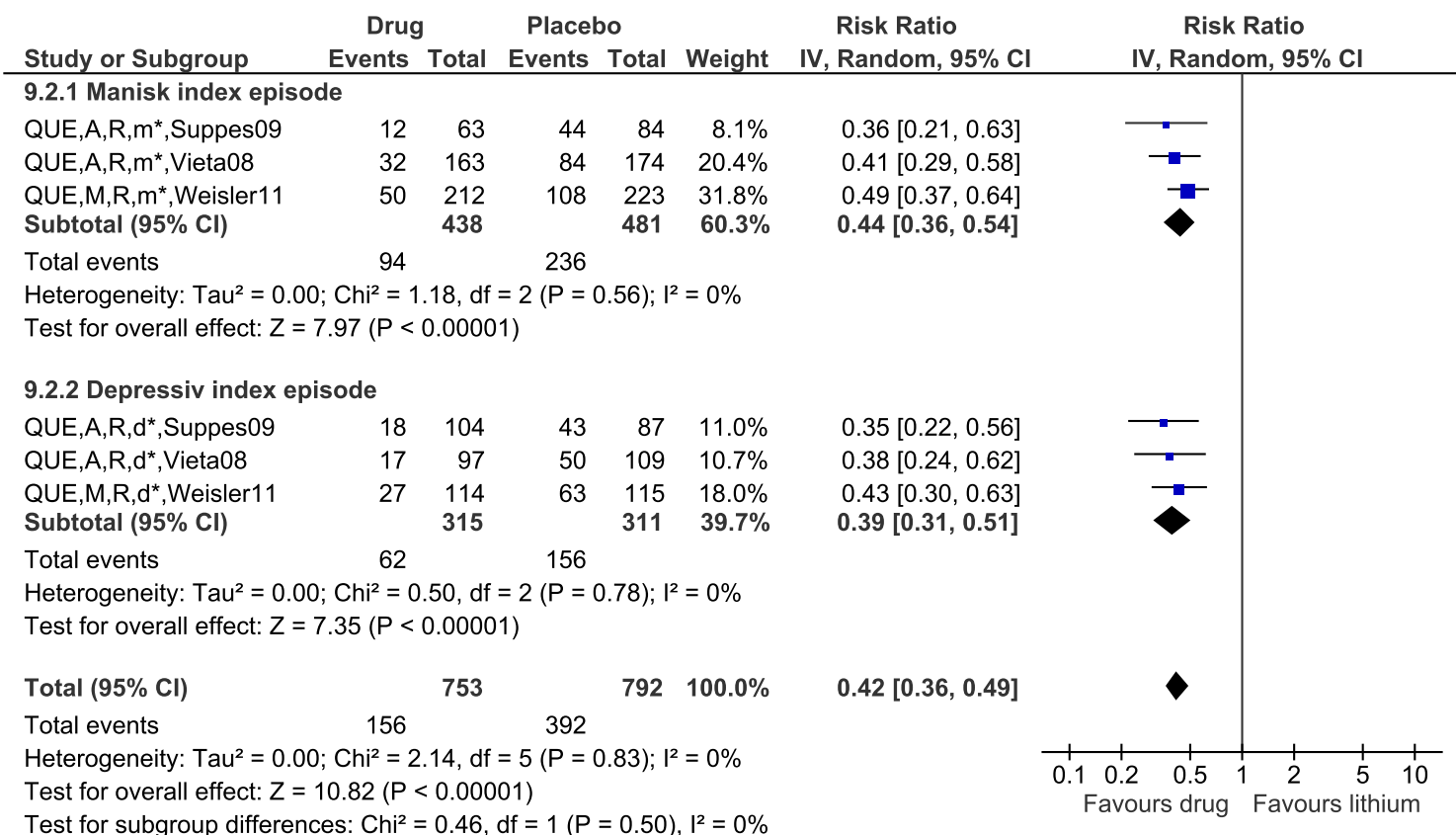
Meta-analyse 5.5: Antikonvulsiva vs. placebo i hhv. monoterapi og add-on terapi.
 Outcome: Ny affektiv episode



Meta-analyse 7.5: Antipsykotika vs. placebo i hhv. monoterapi og add-on terapi.
 Outcome: Ny affektiv episode



Meta-analyse 9.2: Quetiapin vs. placebo ved hhv. manisk og depressiv index-episode.
 Outcome: Ny affektiv episode



Funnel plot visende effektstørrelser for ny affektiv episode for sammenligninger af alle stoffer med placebo

