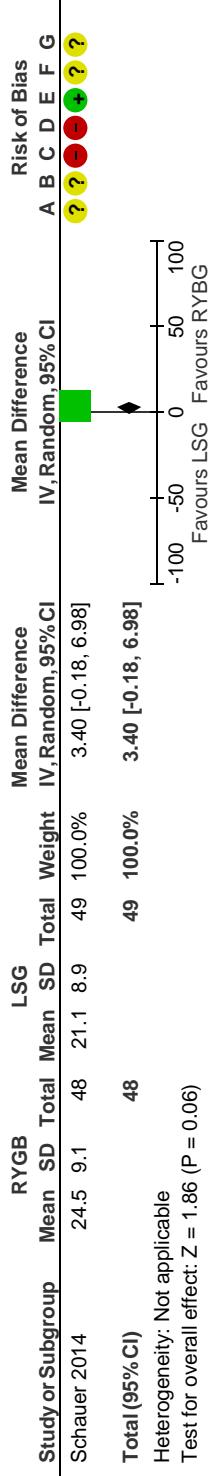


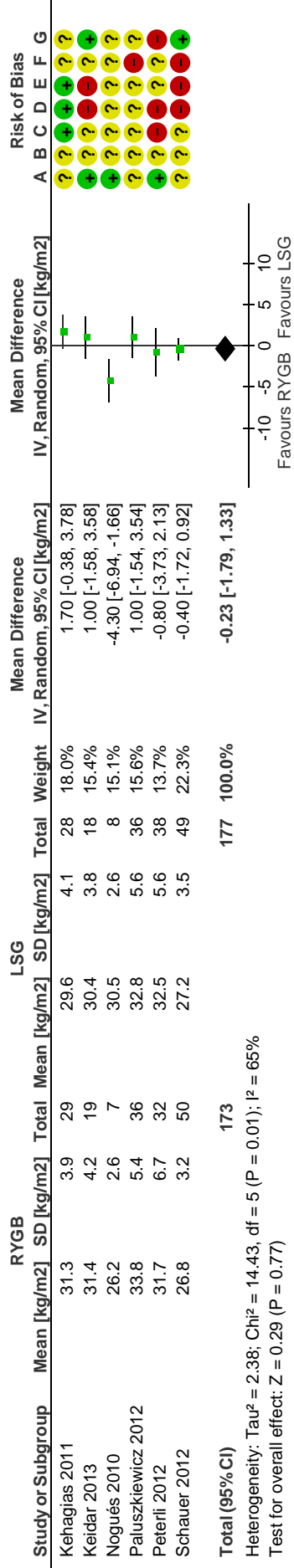
3 Laparoscopic gastric bypass versus laparoscopic sleeve gastrectomy

3.1 Mean weight loss (kg) > 3 years follow-up



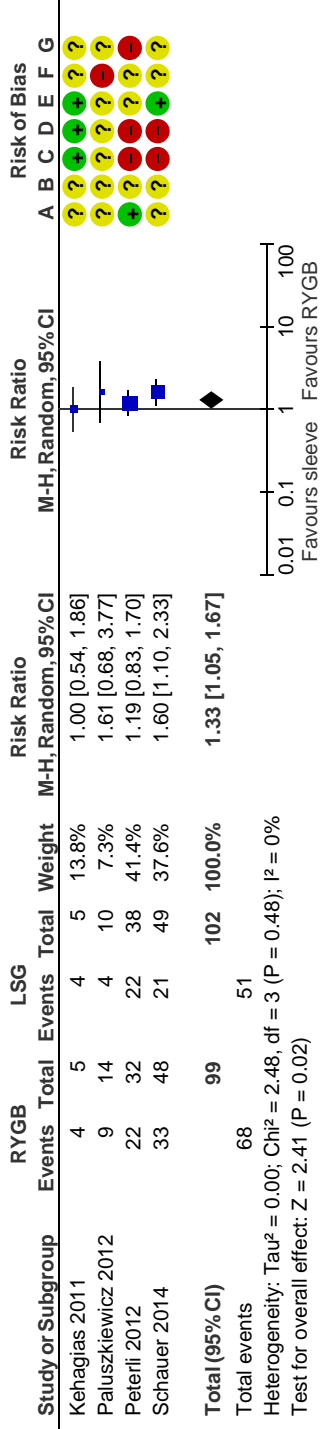
- Risk of bias legend
- (A) Random sequence generation
  - (B) Allocation concealment
  - (C) Blinding of participants and personnel
  - (D) Blinding of outcome assessment
  - (E) Incomplete outcome data
  - (F) Selective reporting
  - (G) Other bias

3.2 Mean BMI at <2years follow-up [kg/m<sup>2</sup>]



- Risk of bias legend
- (A) Random sequence generation
  - (B) Allocation concealment
  - (C) Blinding of participants and personnel
  - (D) Blinding of outcome assessment
  - (E) Incomplete outcome data
  - (F) Selective reporting
  - (G) Other bias

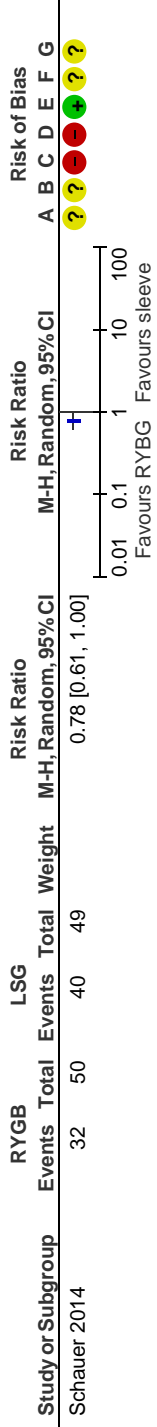
3.3 Remission of diabetes



Risk of bias legend

- (A) Random sequence generation
- (B) Allocation concealment
- (C) Blinding of participants and personnel
- (D) Blinding of outcome assessment
- (E) Incomplete outcome data
- (F) Selective reporting
- (G) Other bias

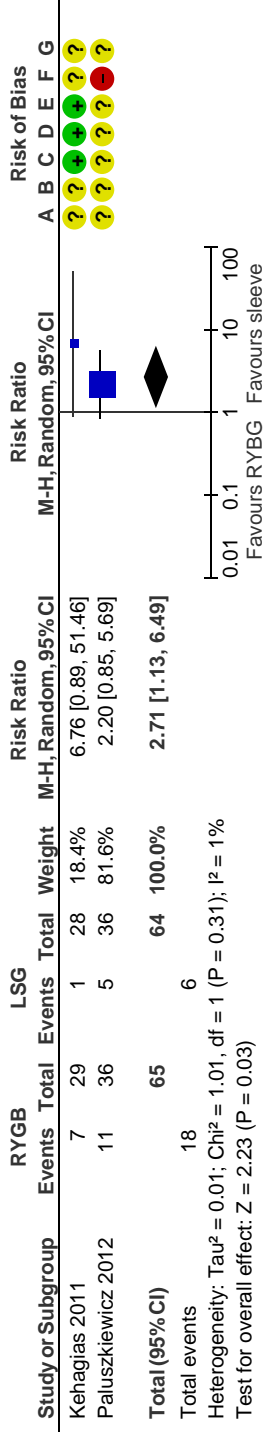
3.4 Hypoglycaemia



Risk of bias legend

- (A) Random sequence generation
- (B) Allocation concealment
- (C) Blinding of participants and personnel
- (D) Blinding of outcome assessment
- (E) Incomplete outcome data
- (F) Selective reporting
- (G) Other bias

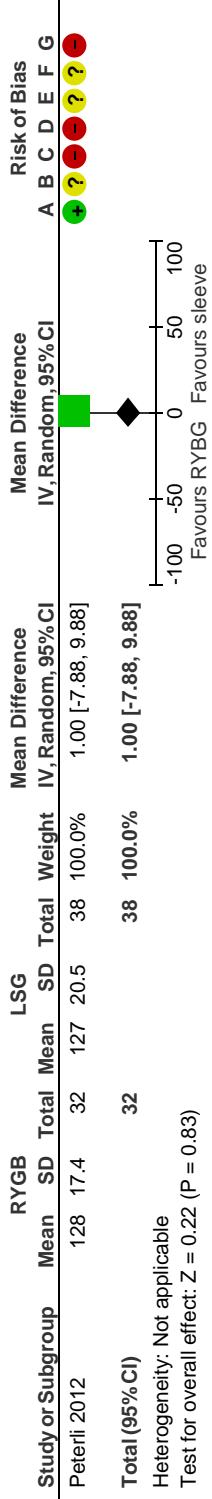
3.5 Vitamin B deficiency



Risk of bias legend

- (A) Random sequence generation
- (B) Allocation concealment
- (C) Blinding of participants and personnel
- (D) Blinding of outcome assessment
- (E) Incomplete outcome data
- (F) Selective reporting
- (G) Other bias

3.6 Health related quality of life



Risk of bias legend

- (A) Random sequence generation
- (B) Allocation concealment
- (C) Blinding of participants and personnel
- (D) Blinding of outcome assessment
- (E) Incomplete outcome data
- (F) Selective reporting
- (G) Other bias