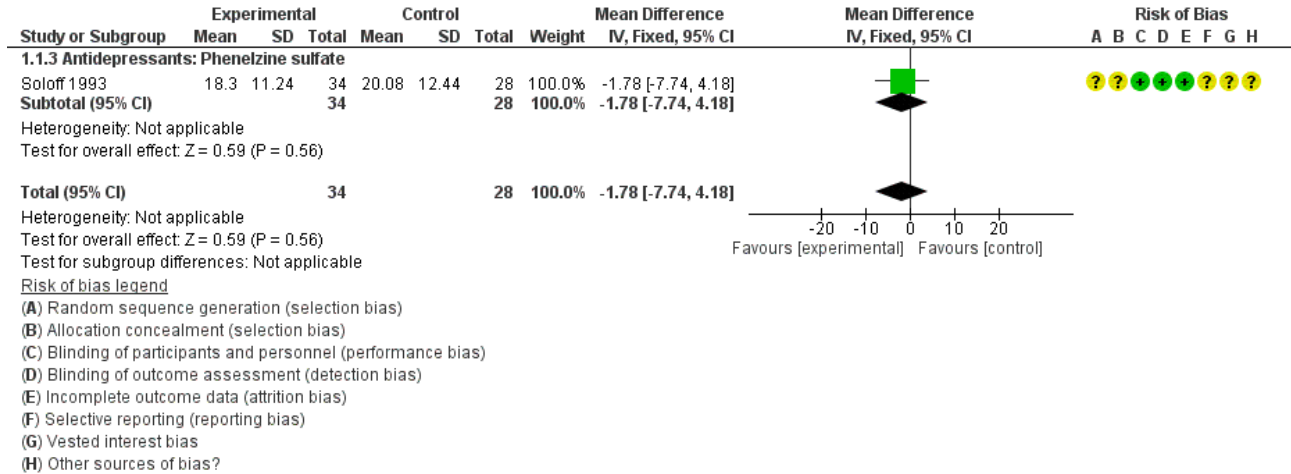


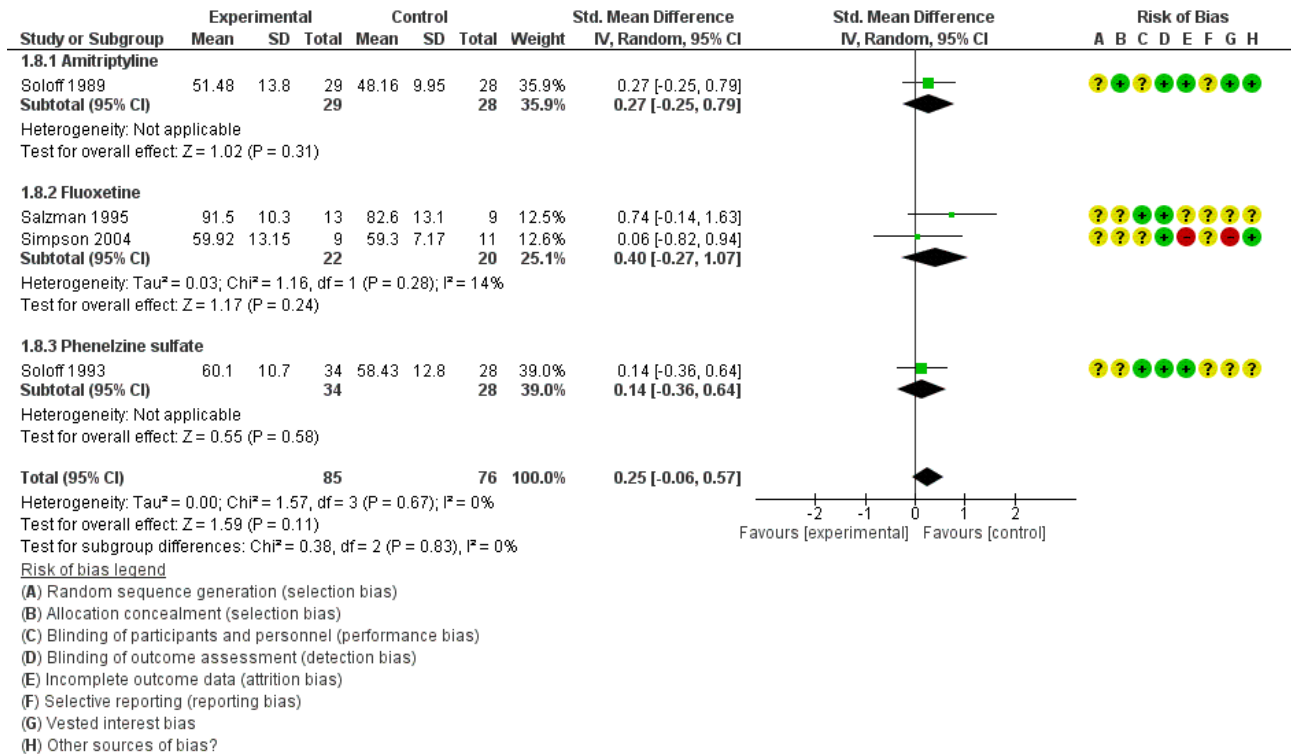
## FOREST PLOTS med risk of bias

### PICO 1: Antidepressiv medicin til behandling af patienter med Borderline Personlighedsforstyrrelse

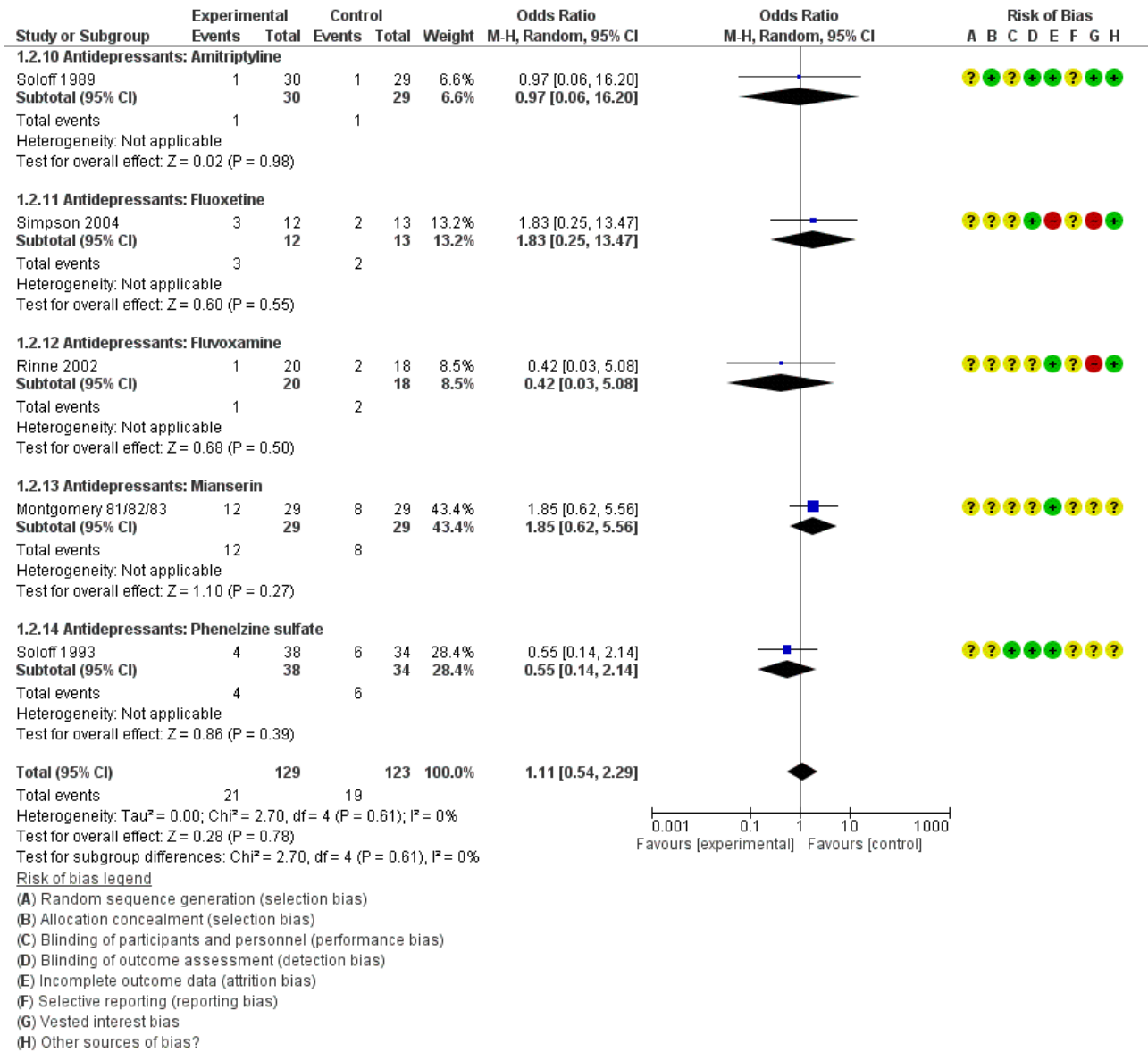
#### Borderline sværhedsgrad



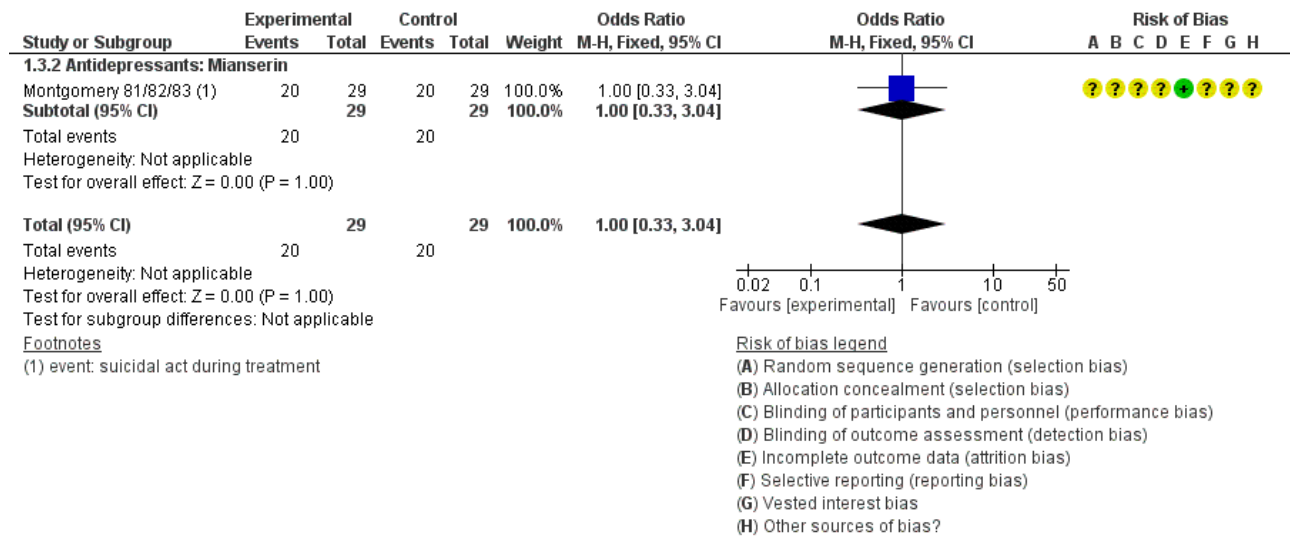
#### Socialt funktionsniveau



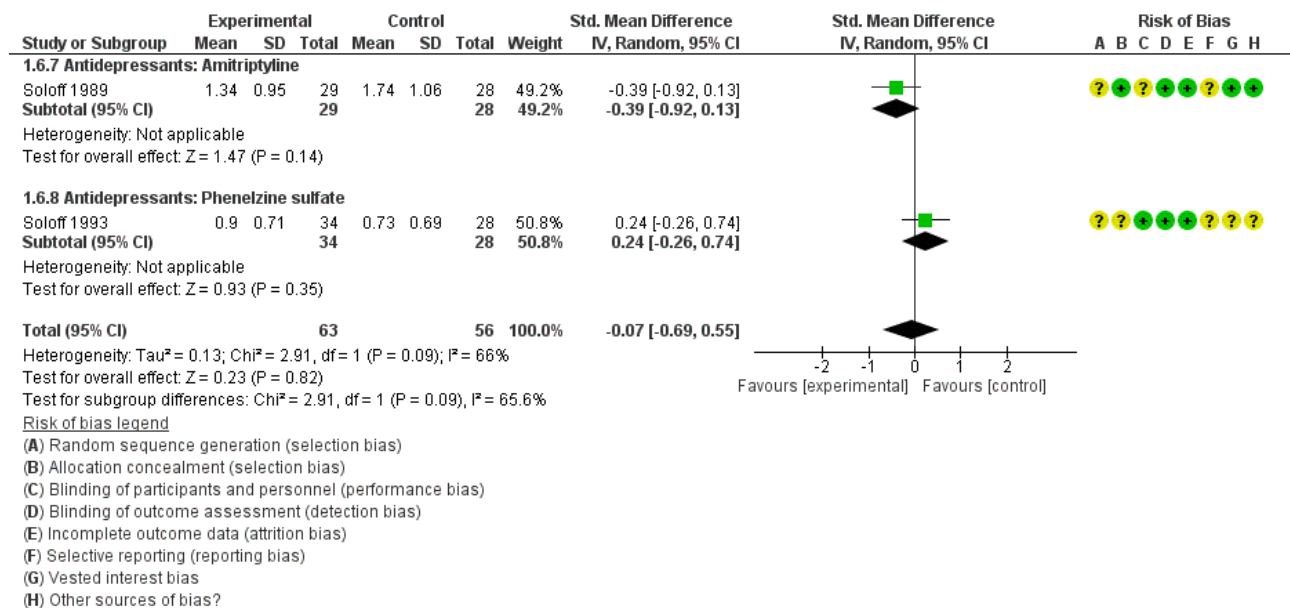
## Drop out



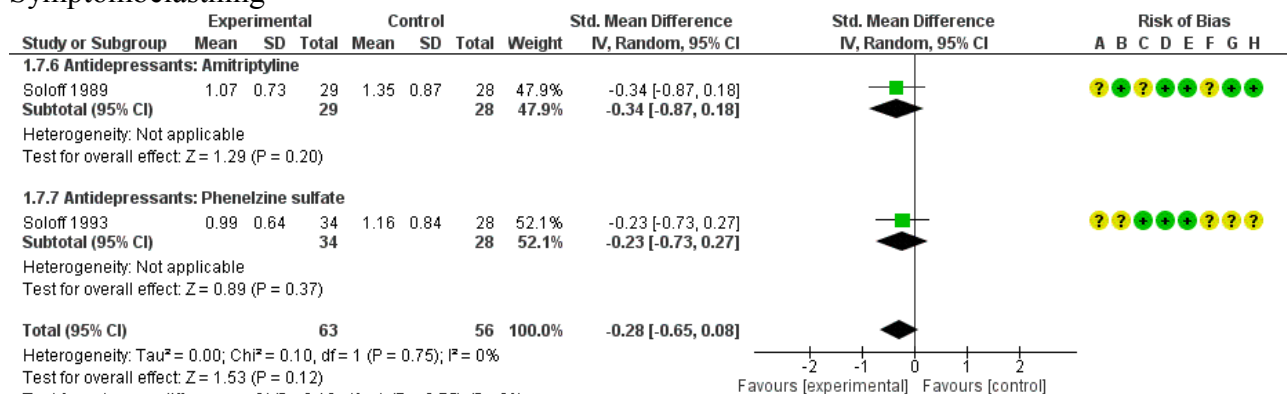
## Selvmonds adfærd



## Interpersonelle problemer



## Symptombelastning

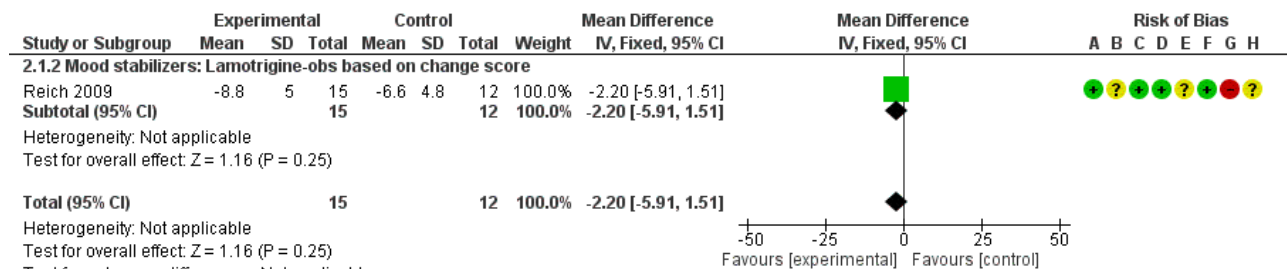


### Risk of bias legend

- (A) Random sequence generation (selection bias)
- (B) Allocation concealment (selection bias)
- (C) Blinding of participants and personnel (performance bias)
- (D) Blinding of outcome assessment (detection bias)
- (E) Incomplete outcome data (attrition bias)
- (F) Selective reporting (reporting bias)
- (G) Vested interest bias
- (H) Other sources of bias?

## PICO 2: Behandling med stemningsstabiliserende medicin til patienter med Borderline Personlighedsforstyrrelse

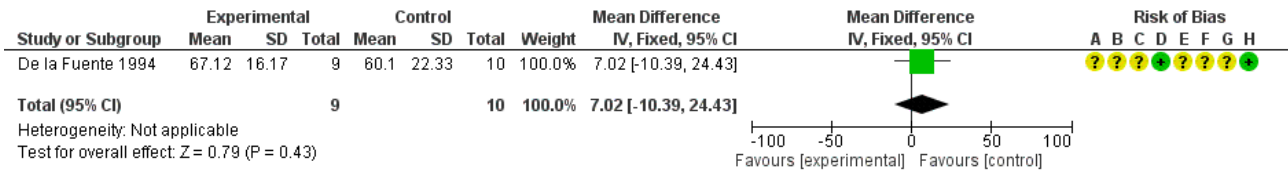
### Borderline sværhedsgrad



### Risk of bias legend

- (A) Random sequence generation (selection bias)
- (B) Allocation concealment (selection bias)
- (C) Blinding of participants and personnel (performance bias)
- (D) Blinding of outcome assessment (detection bias)
- (E) Incomplete outcome data (attrition bias)
- (F) Selective reporting (reporting bias)
- (G) Vested interest bias
- (H) Other sources of bias?

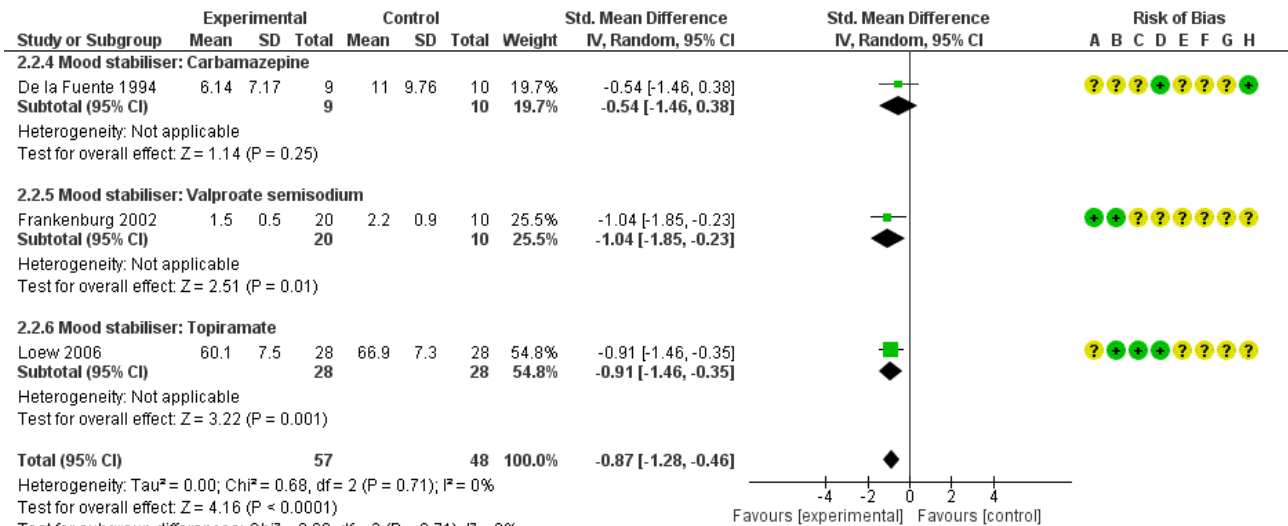
## Socialt funktionsniveau



### Risk of bias legend

- (A) Random sequence generation (selection bias)
- (B) Allocation concealment (selection bias)
- (C) Blinding of participants and personnel (performance bias)
- (D) Blinding of outcome assessment (detection bias)
- (E) Incomplete outcome data (attrition bias)
- (F) Selective reporting (reporting bias)
- (G) Vested interest bias
- (H) Other sources of bias?

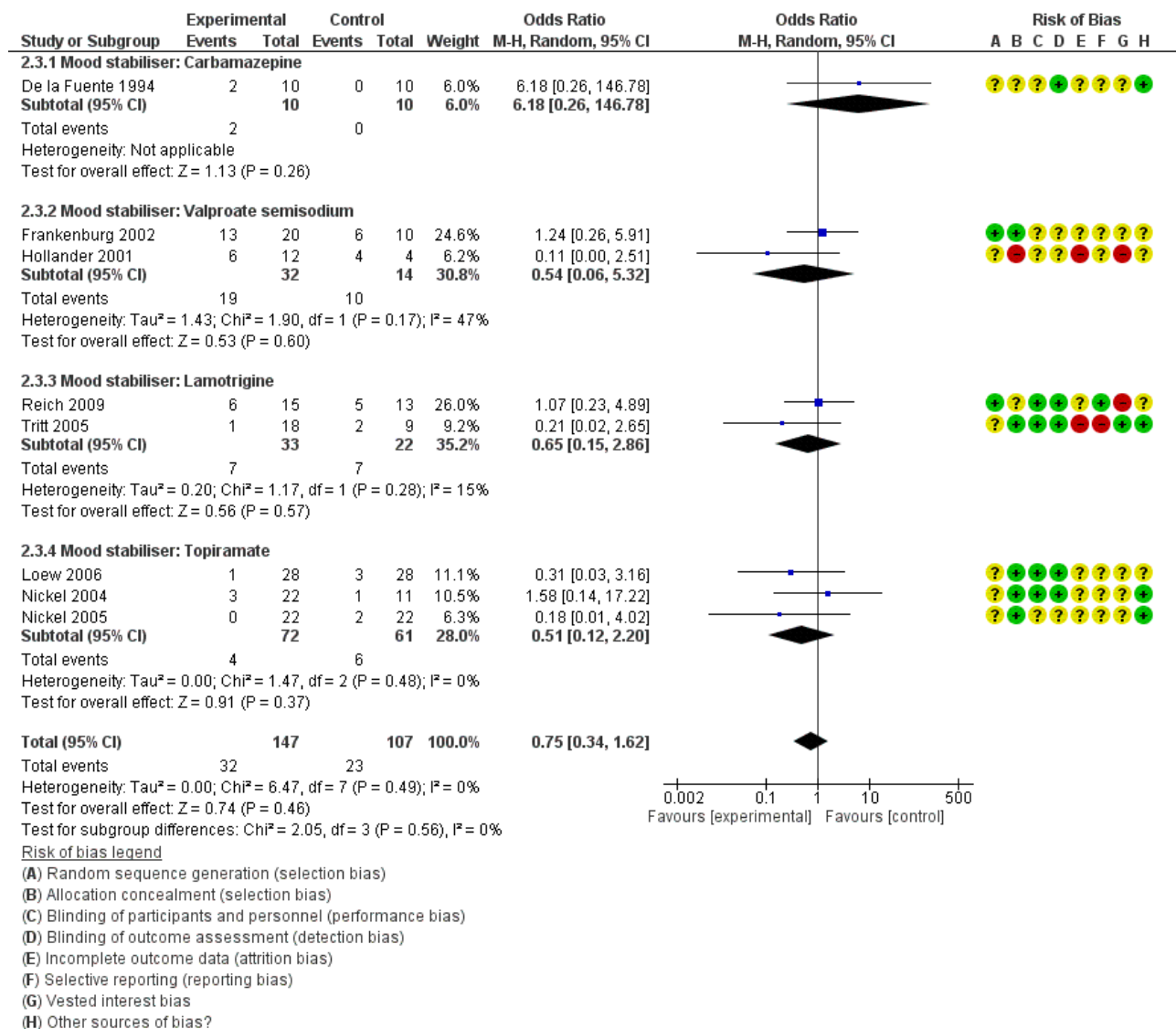
## Interpersonelle problemer



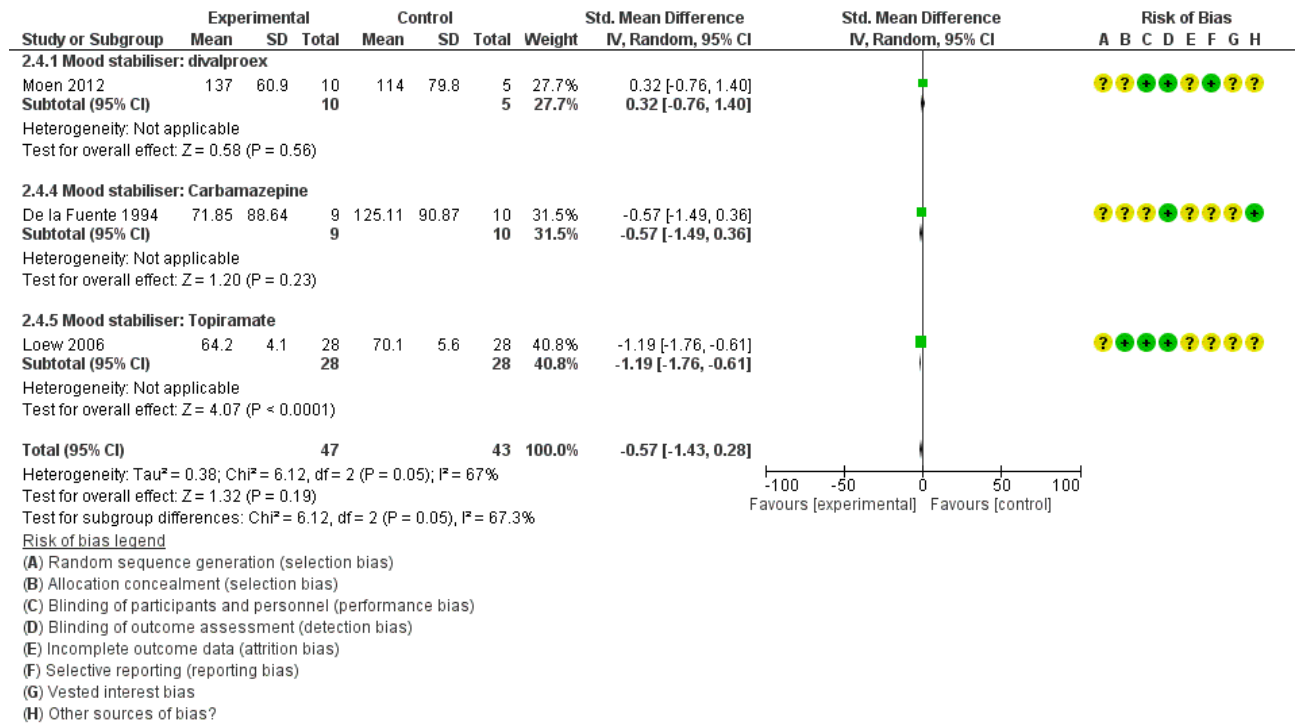
### Risk of bias legend

- (A) Random sequence generation (selection bias)
- (B) Allocation concealment (selection bias)
- (C) Blinding of participants and personnel (performance bias)
- (D) Blinding of outcome assessment (detection bias)
- (E) Incomplete outcome data (attrition bias)
- (F) Selective reporting (reporting bias)
- (G) Vested interest bias
- (H) Other sources of bias?

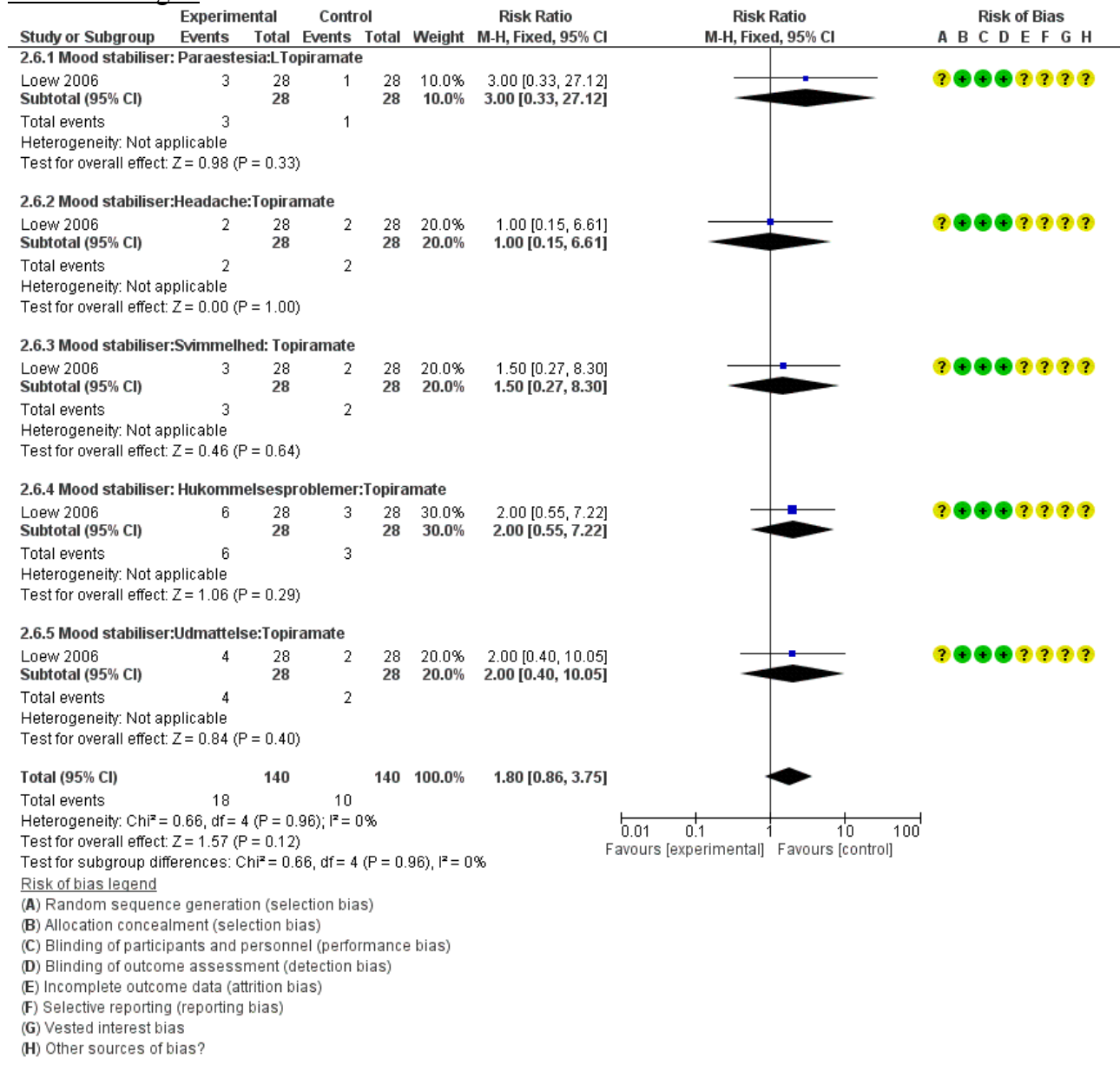
## Drop-out



# Symptombelastning



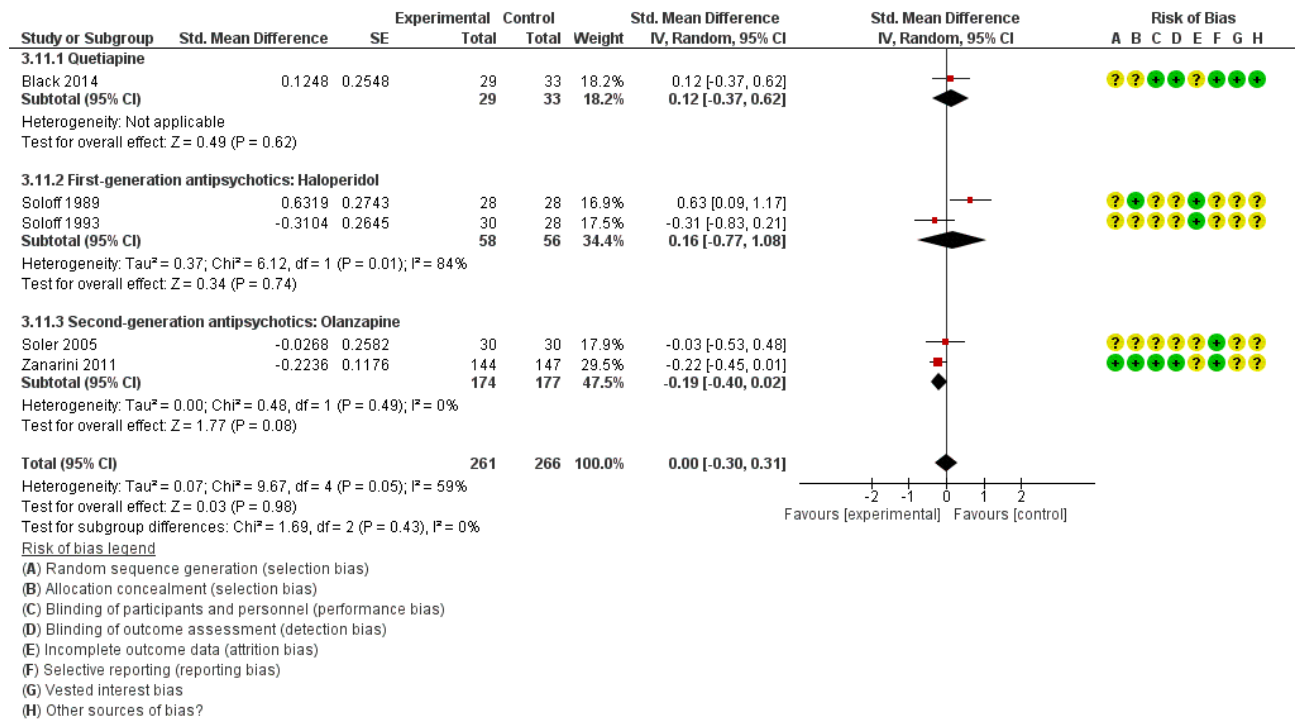
## Skadevirkninger:



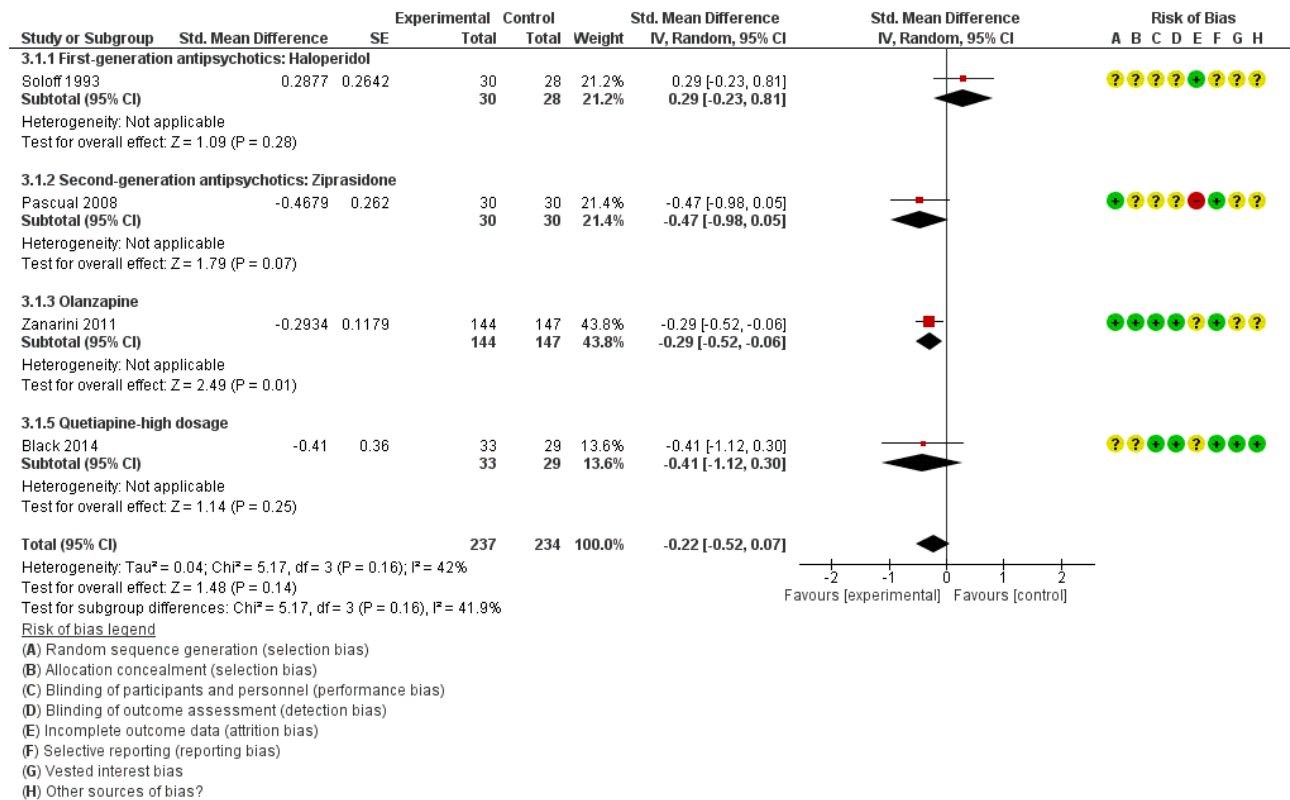


# PICO 3 Antipsykotisk behandling til patienter med Borderline Personlighedsforstyrrelse

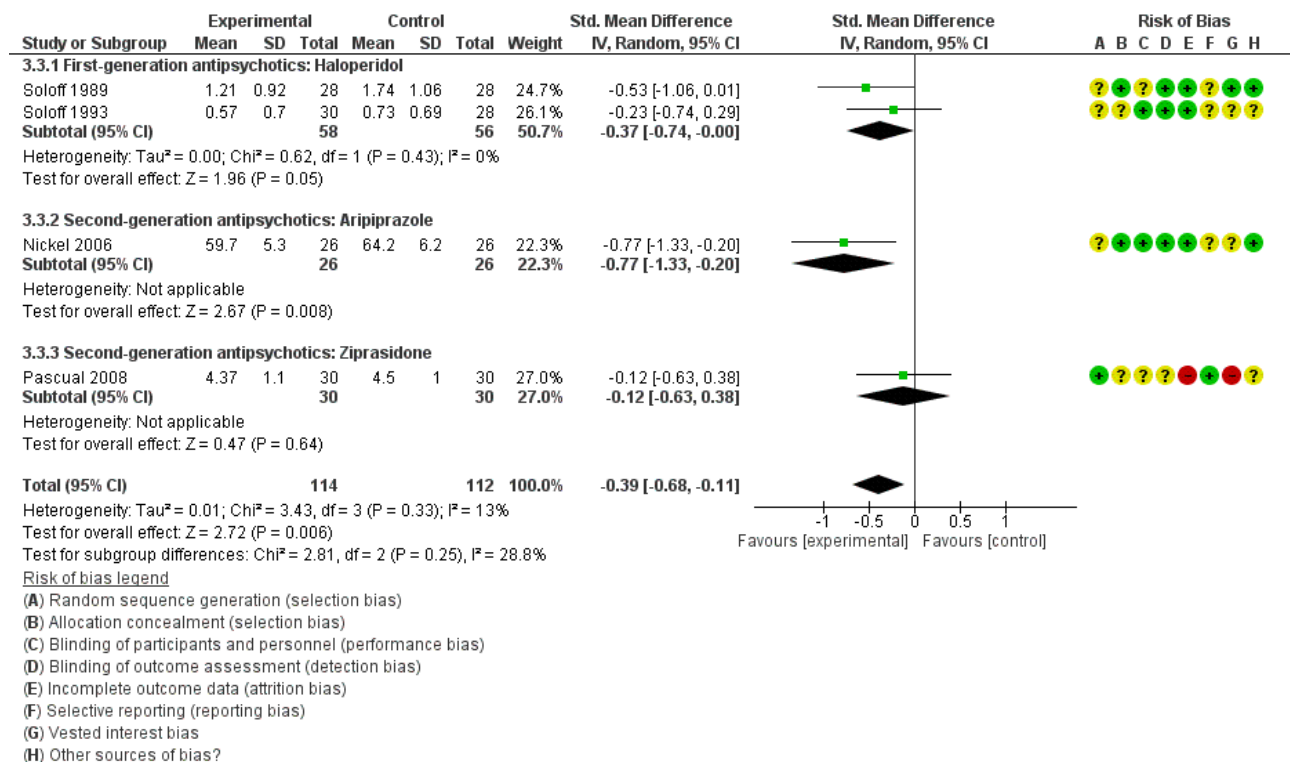
## Socialt funktionsniveau



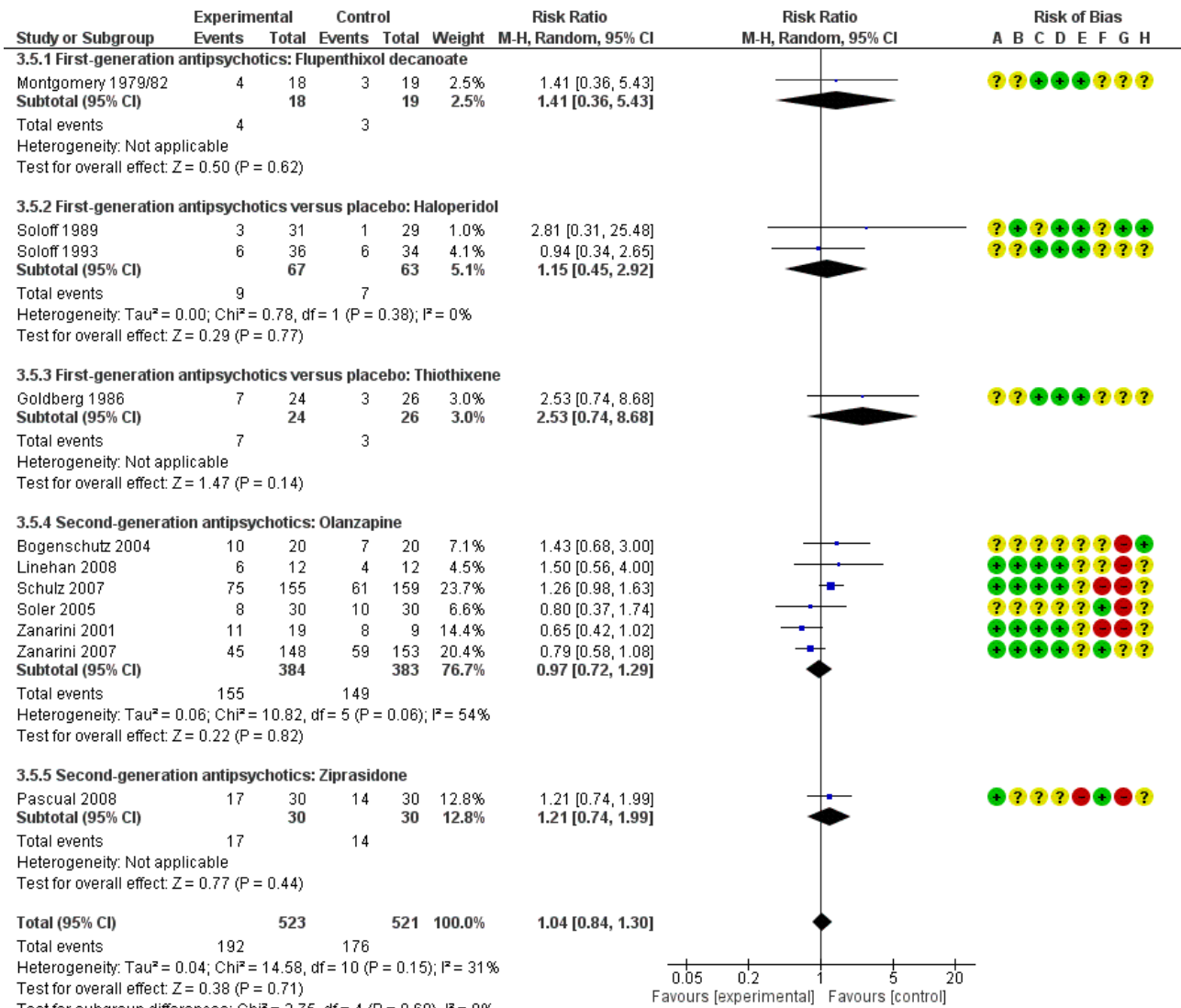
## Borderline sværhedsgrad



## Interpersonelle problemer



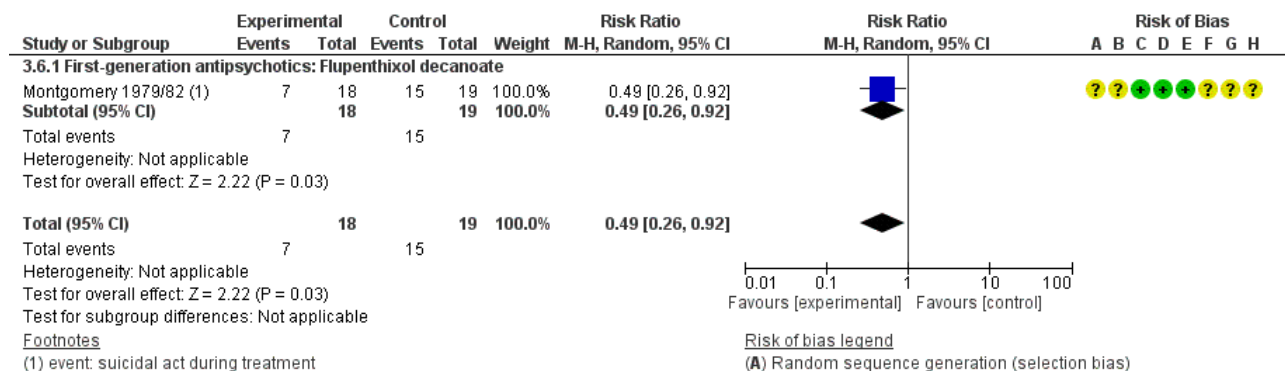
# Drop-out



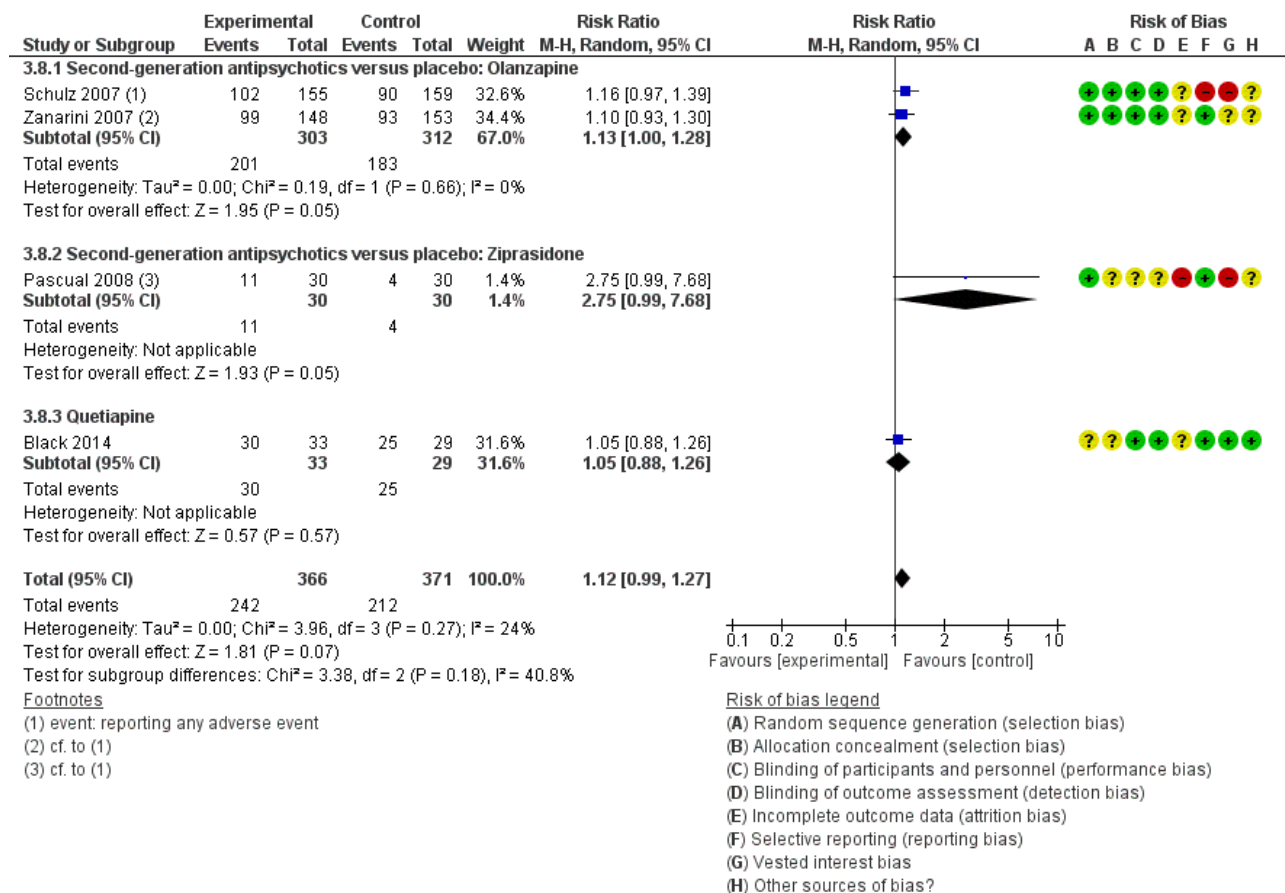
**Risk of bias legend**

- (A) Random sequence generation (selection bias)
- (B) Allocation concealment (selection bias)
- (C) Blinding of participants and personnel (performance bias)
- (D) Blinding of outcome assessment (detection bias)
- (E) Incomplete outcome data (attrition bias)
- (F) Selective reporting (reporting bias)
- (G) Vested interest bias
- (H) Other sources of bias?

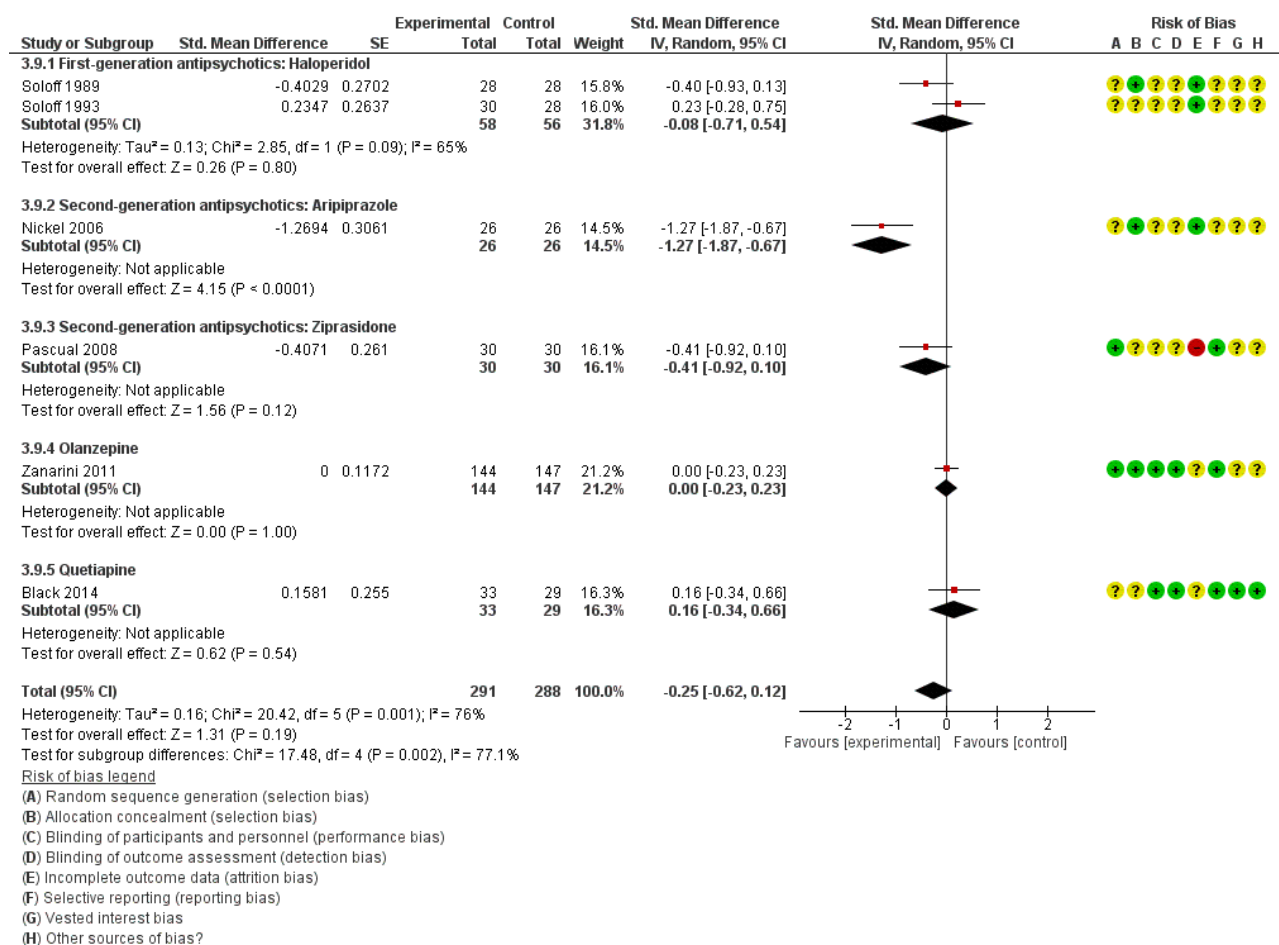
## Selvmondsadfærd



## Skadevirkninger totalt

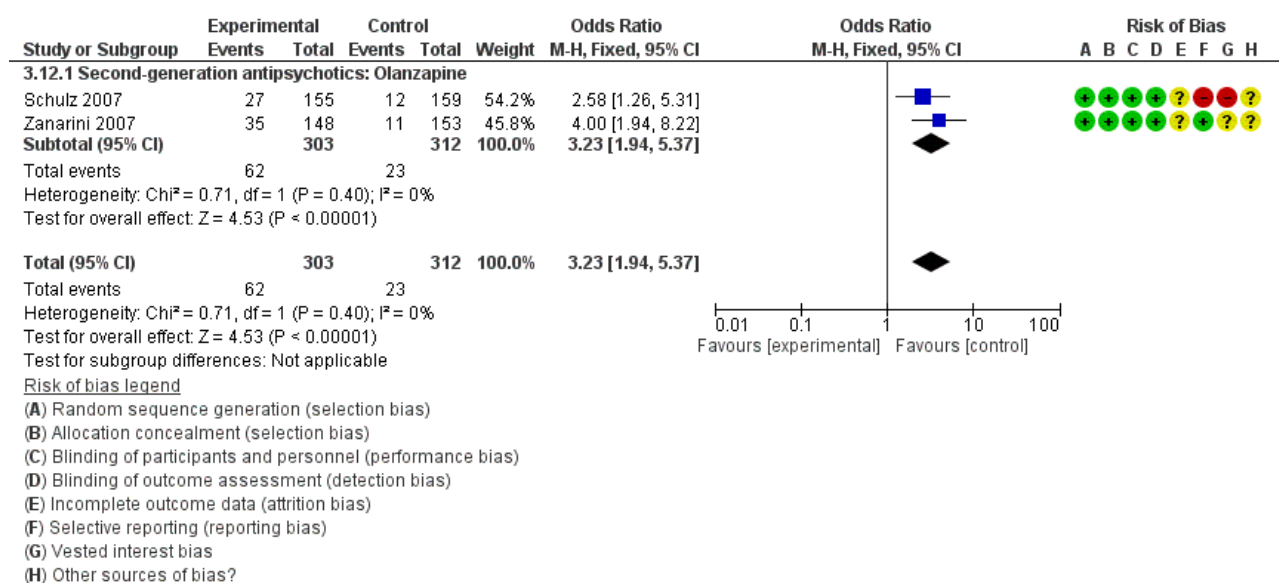


## Symptombelastning

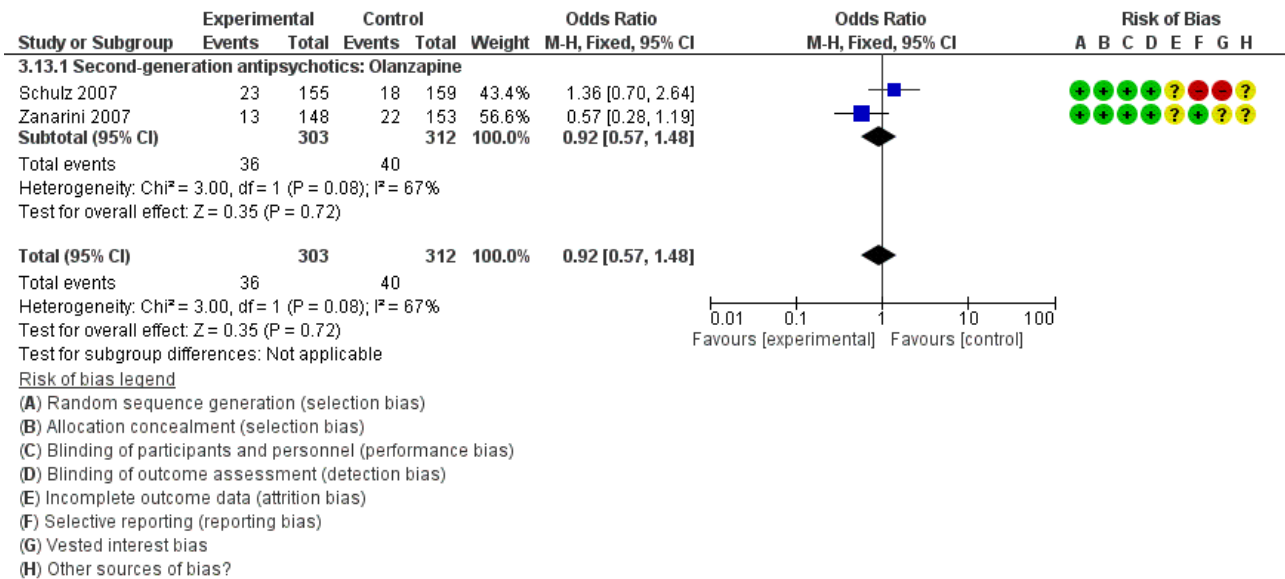


## Skadevirkninger:

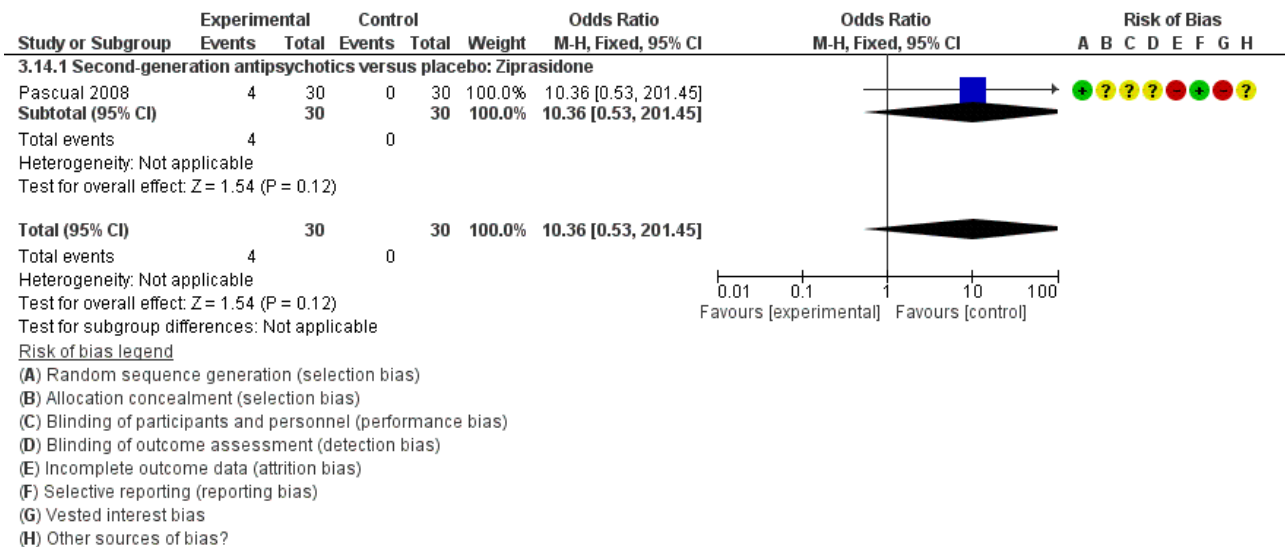
### Forøget appetit



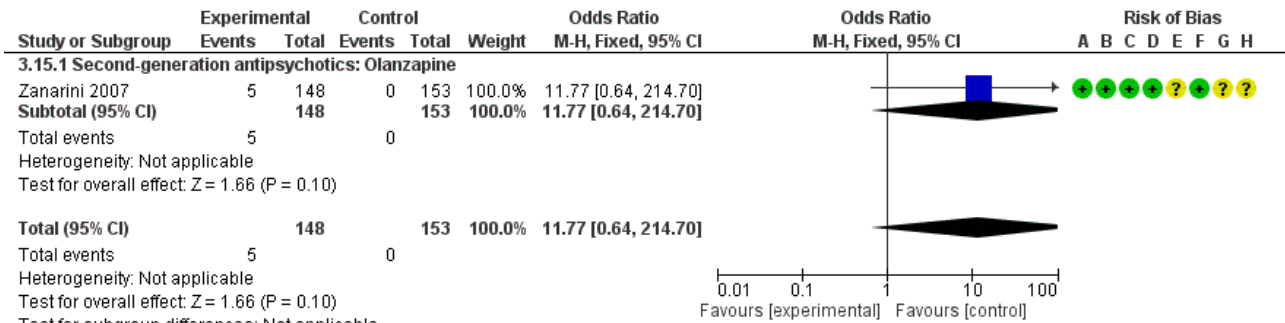
## Hovedpine



## Svimmelhed:



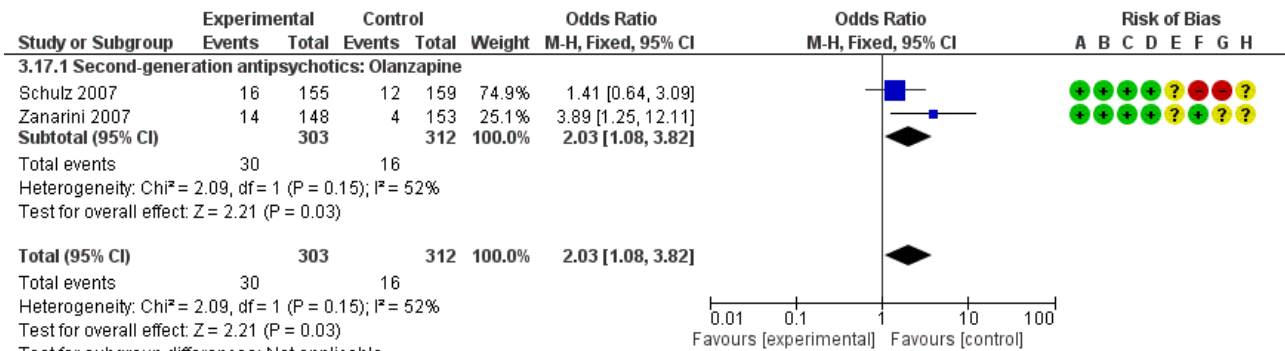
## Forstyrrelse i opmærksomhedsevn



### Risk of bias legend

- (A) Random sequence generation (selection bias)
- (B) Allocation concealment (selection bias)
- (C) Blinding of participants and personnel (performance bias)
- (D) Blinding of outcome assessment (detection bias)
- (E) Incomplete outcome data (attrition bias)
- (F) Selective reporting (reporting bias)
- (G) Vested interest bias
- (H) Other sources of bias?

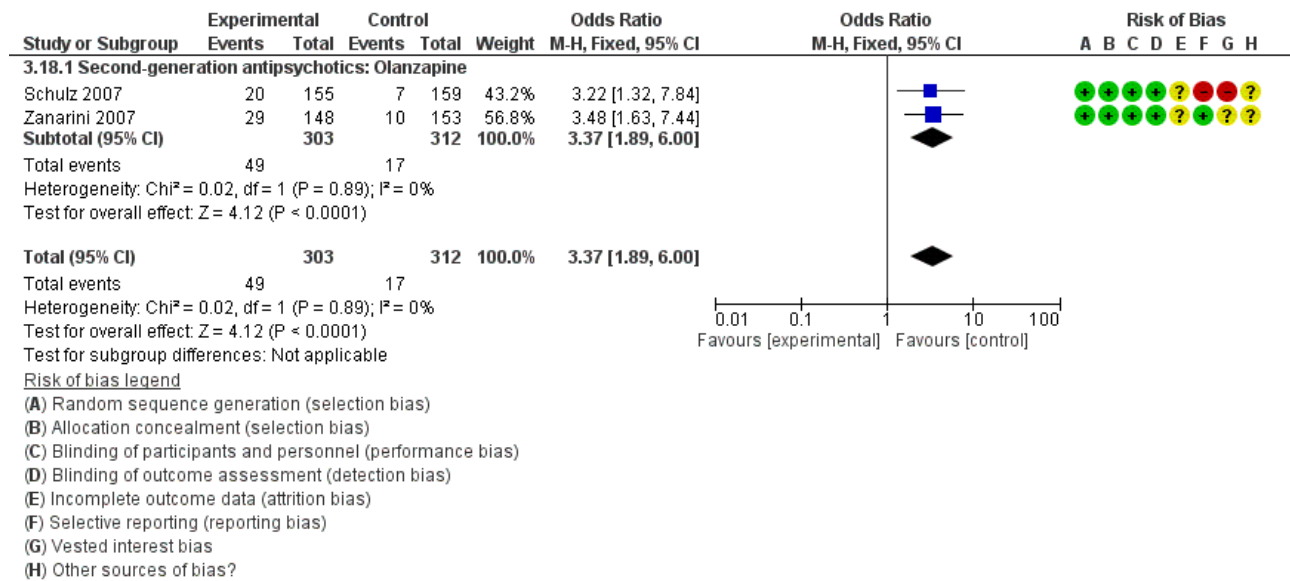
## Træthed



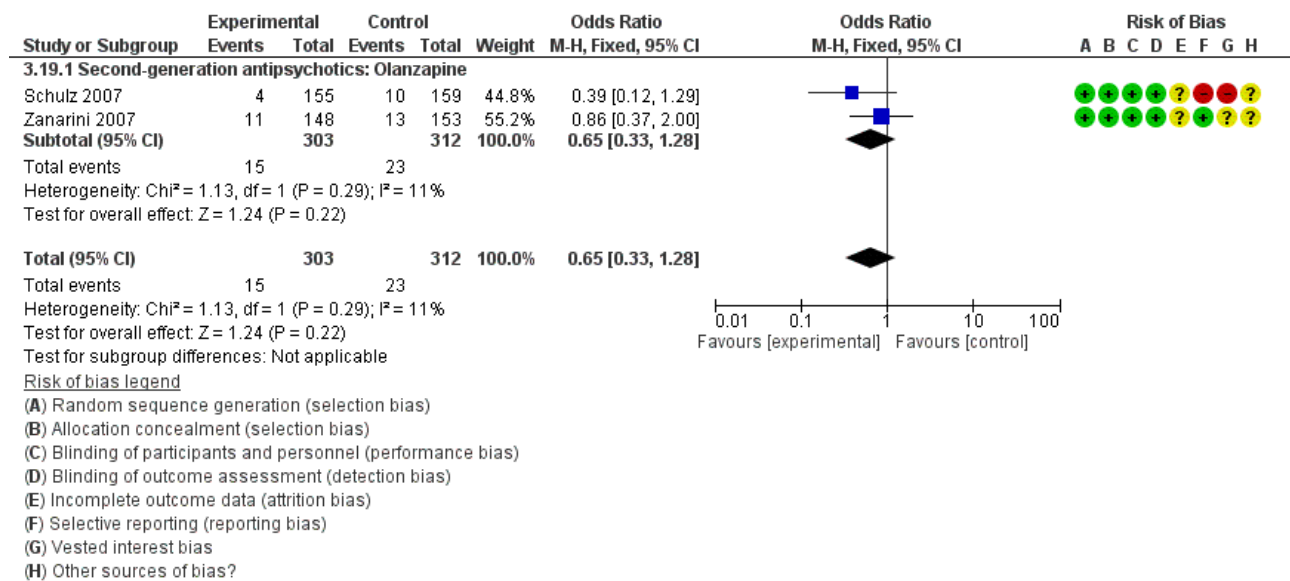
### Risk of bias legend

- (A) Random sequence generation (selection bias)
- (B) Allocation concealment (selection bias)
- (C) Blinding of participants and personnel (performance bias)
- (D) Blinding of outcome assessment (detection bias)
- (E) Incomplete outcome data (attrition bias)
- (F) Selective reporting (reporting bias)
- (G) Vested interest bias
- (H) Other sources of bias?

## Søvnforstyrrelse

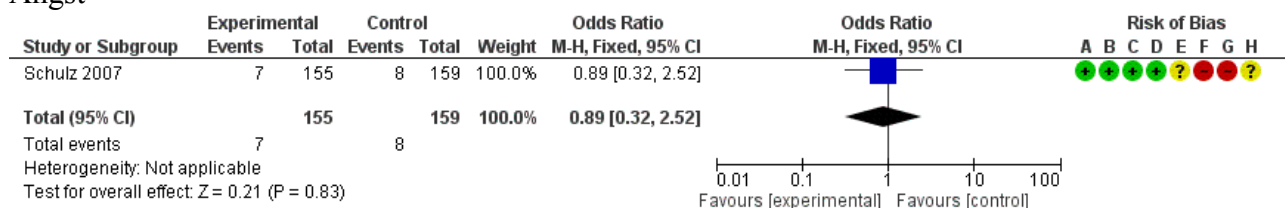


## Indsovningsproblemer





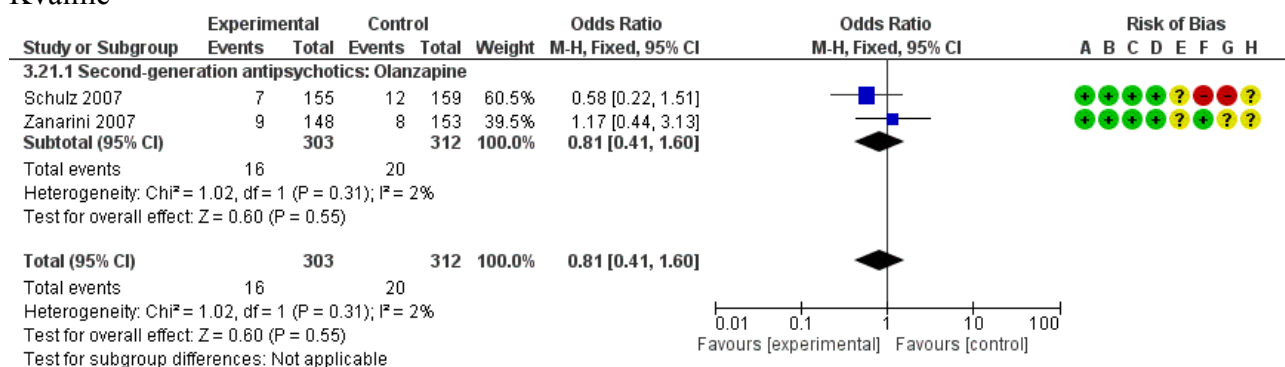
## Angst



### Risk of bias legend

- (A) Random sequence generation (selection bias)
- (B) Allocation concealment (selection bias)
- (C) Blinding of participants and personnel (performance bias)
- (D) Blinding of outcome assessment (detection bias)
- (E) Incomplete outcome data (attrition bias)
- (F) Selective reporting (reporting bias)
- (G) Vested interest bias
- (H) Other sources of bias?

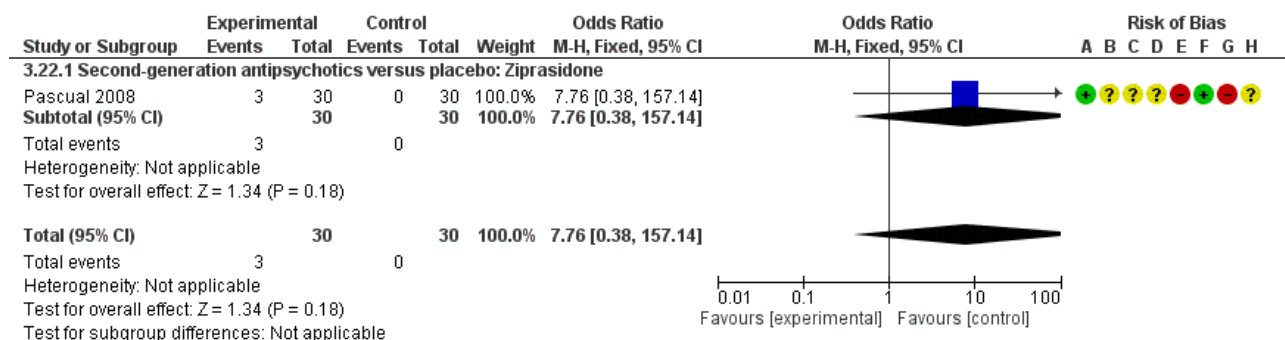
## Kvalme



### Risk of bias legend

- (A) Random sequence generation (selection bias)
- (B) Allocation concealment (selection bias)
- (C) Blinding of participants and personnel (performance bias)
- (D) Blinding of outcome assessment (detection bias)
- (E) Incomplete outcome data (attrition bias)
- (F) Selective reporting (reporting bias)
- (G) Vested interest bias
- (H) Other sources of bias?

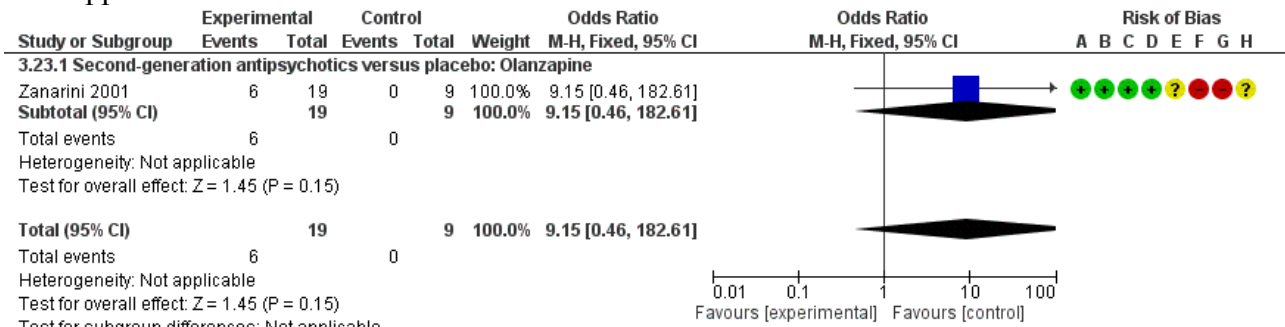
## Generelt ubehag



### Risk of bias legend

- (A) Random sequence generation (selection bias)
- (B) Allocation concealment (selection bias)
- (C) Blinding of participants and personnel (performance bias)
- (D) Blinding of outcome assessment (detection bias)
- (E) Incomplete outcome data (attrition bias)
- (F) Selective reporting (reporting bias)
- (G) Vested interest bias
- (H) Other sources of bias?

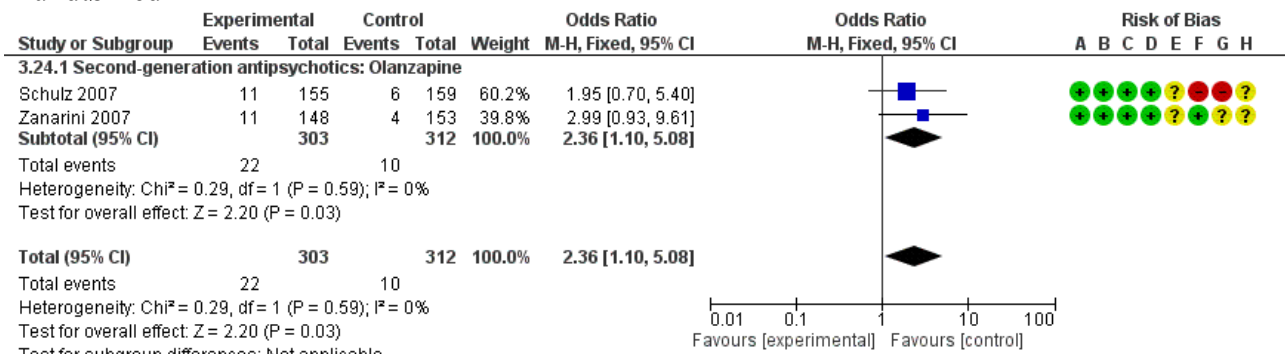
## Forstoppelse



### Risk of bias legend

- (A) Random sequence generation (selection bias)
- (B) Allocation concealment (selection bias)
- (C) Blinding of participants and personnel (performance bias)
- (D) Blinding of outcome assessment (detection bias)
- (E) Incomplete outcome data (attrition bias)
- (F) Selective reporting (reporting bias)
- (G) Vested interest bias
- (H) Other sources of bias?

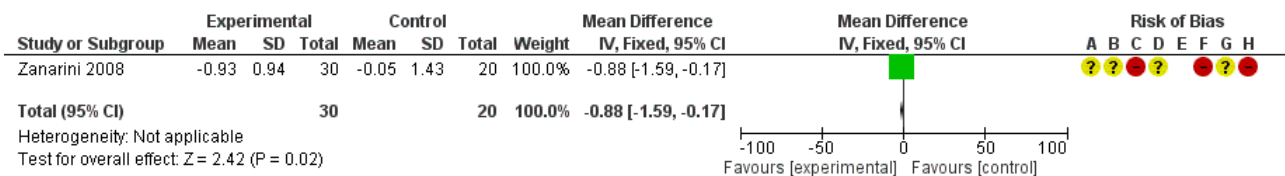
## Mundtørhed



### Risk of bias legend

- (A) Random sequence generation (selection bias)
- (B) Allocation concealment (selection bias)
- (C) Blinding of participants and personnel (performance bias)
- (D) Blinding of outcome assessment (detection bias)
- (E) Incomplete outcome data (attrition bias)
- (F) Selective reporting (reporting bias)
- (G) Vested interest bias
- (H) Other sources of bias?

## PICO 4 Psykoedukation til patienter med Borderline Personlighedsforstyrrelse

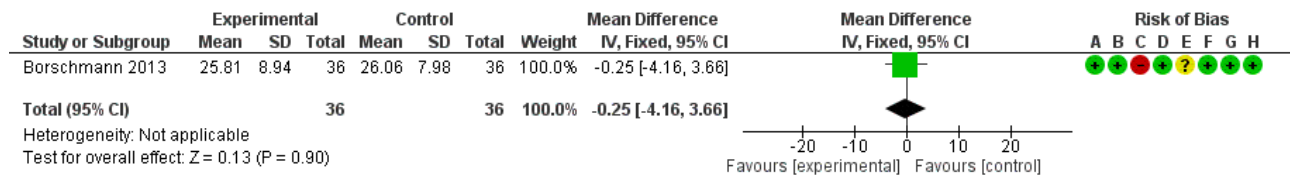


### Risk of bias legend

- (A) Random sequence generation (selection bias)
- (B) Allocation concealment (selection bias)
- (C) Blinding of participants and personnel (performance bias)
- (D) Blinding of outcome assessment (detection bias)
- (E) Incomplete outcome data (attrition bias)
- (F) Selective reporting (reporting bias)
- (G) Vested interest bias
- (H) Other sources of bias?

## PICO 8: Individuelle kriseplaner til patienter med Borderline Personlighedsforstyrrelse

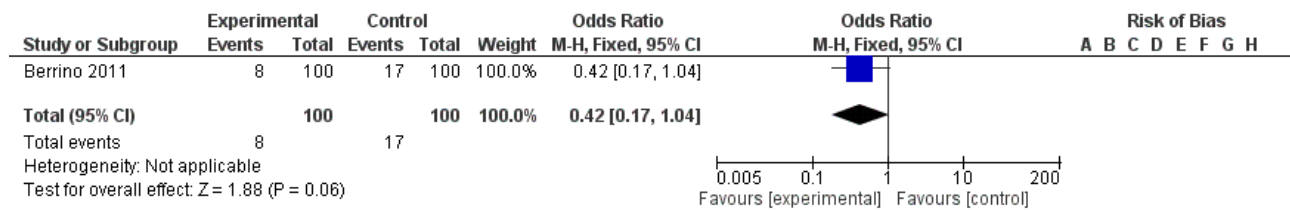
### Socialt funktionsniveau



#### Risk of bias legend

- (A) Random sequence generation (selection bias)
- (B) Allocation concealment (selection bias)
- (C) Blinding of participants and personnel (performance bias)
- (D) Blinding of outcome assessment (detection bias)
- (E) Incomplete outcome data (attrition bias)
- (F) Selective reporting (reporting bias)
- (G) Vested interest bias
- (H) Other sources of bias?

### Selvmondsforsøg



#### Risk of bias legend

- (A) Random sequence generation (selection bias)
- (B) Allocation concealment (selection bias)
- (C) Blinding of participants and personnel (performance bias)
- (D) Blinding of outcome assessment (detection bias)
- (E) Incomplete outcome data (attrition bias)
- (F) Selective reporting (reporting bias)
- (G) Vested interest bias
- (H) Other sources of bias?