

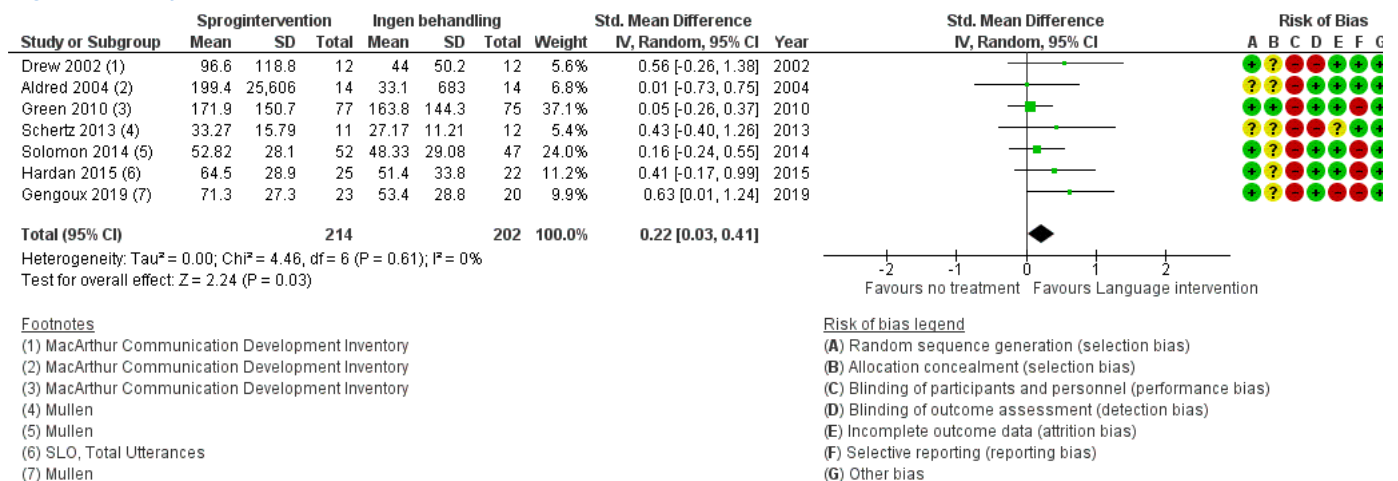
Figures

Figure 1

	Random sequence generation (selection bias)	Allocation concealment (selection bias)	Blinding of participants and personnel (performance bias)	Blinding of outcome assessment (detection bias)	Incomplete outcome data (attrition bias)	Selective reporting (reporting bias)	Other bias
Aldred 2004	?	?	+	+	+	+	+
Carter 2011	+	?	+	+	+	+	+
Casenhiser 2013	+	?	+	+	?	+	+
Drew 2002	+	?	+	+	+	+	+
Gengoux 2019	+	?	+	+	+	+	+
Goods 2012	+	?	+	+	+	+	+
Green 2010	+	+	+	+	+	+	+
Hardan 2015	+	?	+	+	+	+	+
Schertz 2013	?	?	+	+	?	+	+
Solomon 2014	+	?	+	+	+	+	+
Venker 2012	?	?	+	+	?	+	+

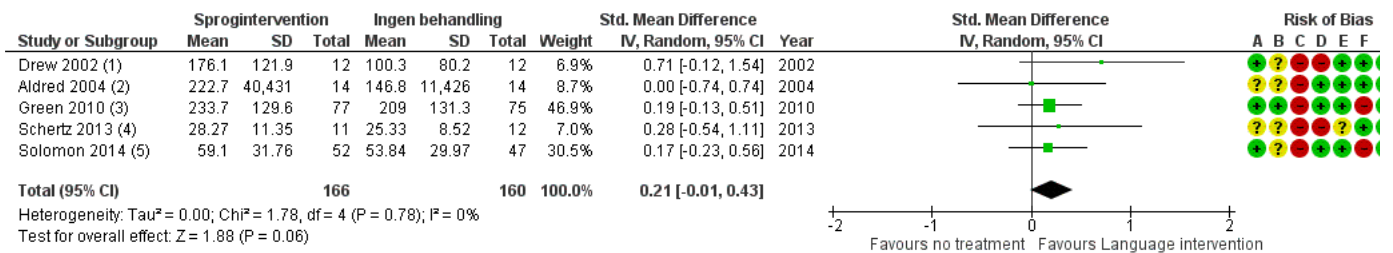
Risk of bias summary: review authors' judgements about each risk of bias item for each included study.

Figure 2 (Analysis 1.1)



Forest plot of comparison: 1 Sprogintervention vs ingen behanding, outcome: 1.1 Sprog (Ekspressivt).

Figure 3 (Analysis 1.2)



Footnotes

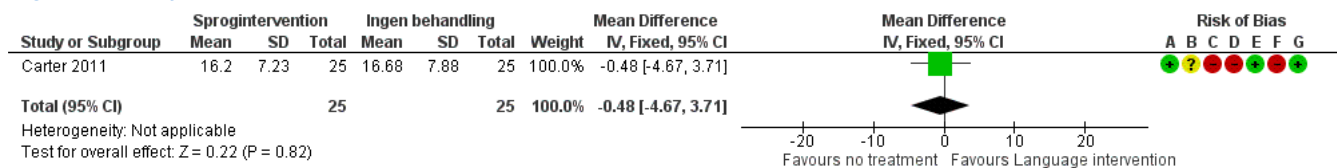
- (1) MacArthur Communication Development Inventory
- (2) MacArthur Communication Development Inventory
- (3) MacArthur Communication Development Inventory
- (4) Mullen
- (5) Mullen

Risk of bias legend

- (A) Random sequence generation (selection bias)
- (B) Allocation concealment (selection bias)
- (C) Blinding of participants and personnel (performance bias)
- (D) Blinding of outcome assessment (detection bias)
- (E) Incomplete outcome data (attrition bias)
- (F) Selective reporting (reporting bias)
- (G) Other bias

Forest plot of comparison: 1 Sprogintervention vs ingen behandling, outcome: 1.2 Sprog (Forståelse).

Figure 4 (Analysis 1.3)

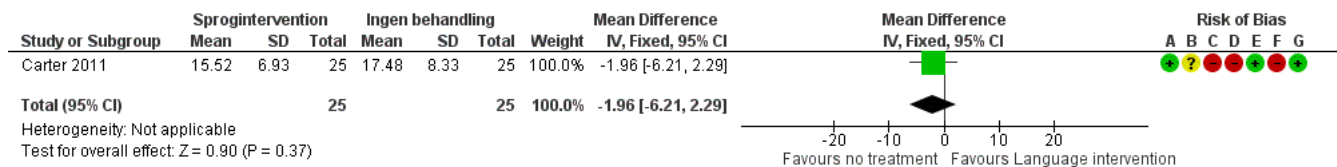


Risk of bias legend

- (A) Random sequence generation (selection bias)
- (B) Allocation concealment (selection bias)
- (C) Blinding of participants and personnel (performance bias)
- (D) Blinding of outcome assessment (detection bias)
- (E) Incomplete outcome data (attrition bias)
- (F) Selective reporting (reporting bias)
- (G) Other bias

Forest plot of comparison: 1 Sprogintervention vs ingen behandling, outcome: 1.3 Sprog (Ekspressivt), Mullen, FU.

Figure 5 (Analysis 1.4)

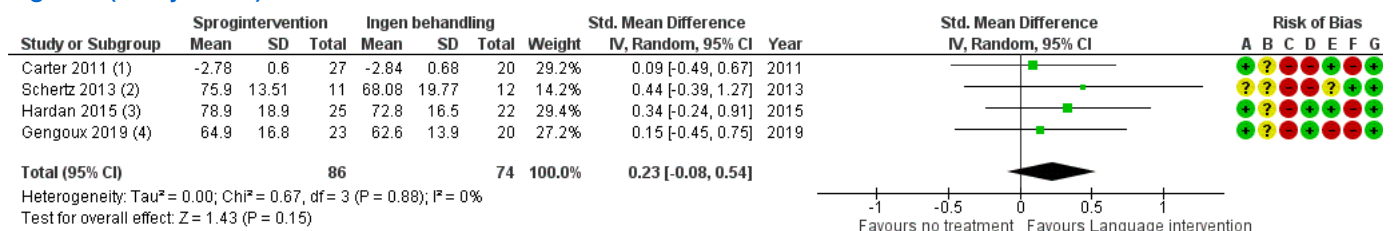


Risk of bias legend

- (A) Random sequence generation (selection bias)
- (B) Allocation concealment (selection bias)
- (C) Blinding of participants and personnel (performance bias)
- (D) Blinding of outcome assessment (detection bias)
- (E) Incomplete outcome data (attrition bias)
- (F) Selective reporting (reporting bias)
- (G) Other bias

Forest plot of comparison: 1 Sprogintervention vs ingen behandling, outcome: 1.4 Sprog (Forståelse), Mullen, FU.

Figure 6 (Analysis 1.5)



Footnotes

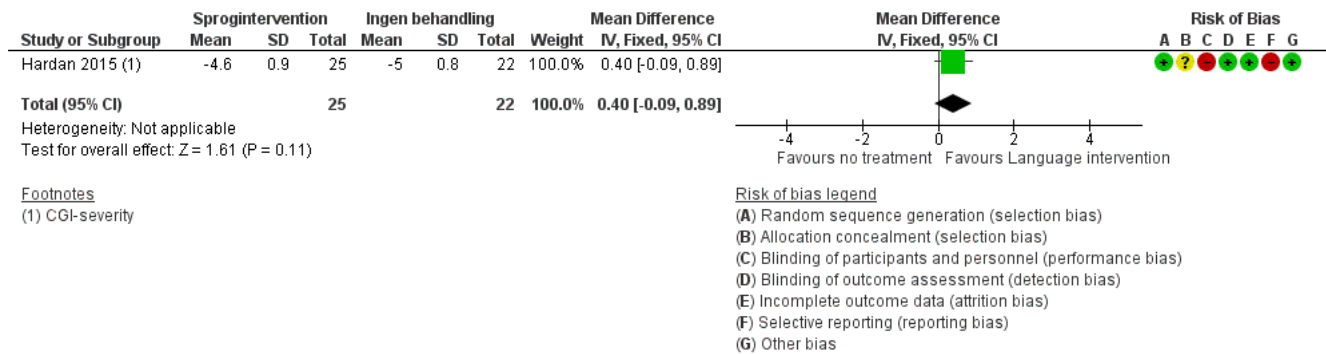
- (1) PIA-CV nonverbal communication\*, lower better
- (2) Vineland communication standard score, higher better
- (3) Vineland communication standard score, higher better
- (4) Vineland communication standard score, higher better

Risk of bias legend

- (A) Random sequence generation (selection bias)
- (B) Allocation concealment (selection bias)
- (C) Blinding of participants and personnel (performance bias)
- (D) Blinding of outcome assessment (detection bias)
- (E) Incomplete outcome data (attrition bias)
- (F) Selective reporting (reporting bias)
- (G) Other bias

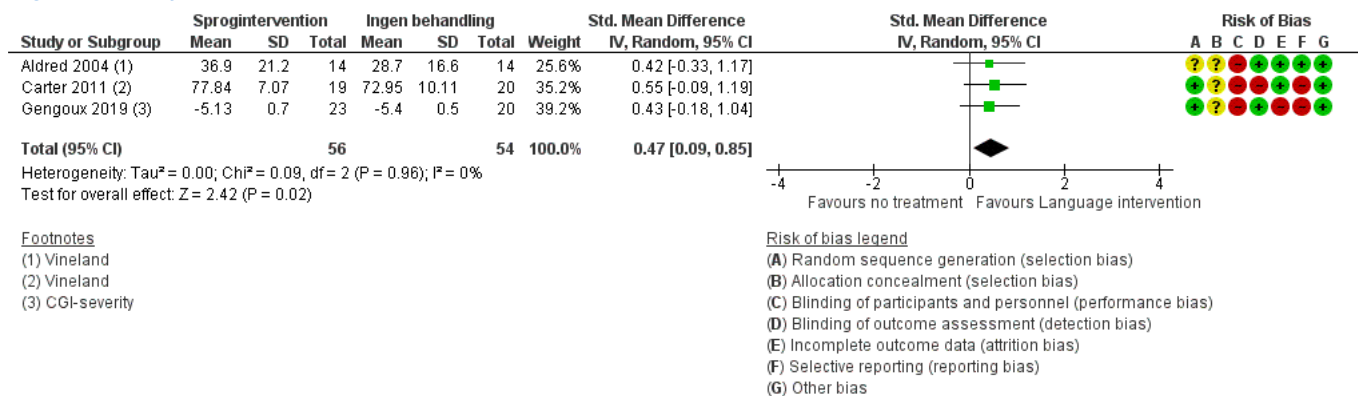
Forest plot of comparison: 1 Sprogintervention vs ingen behandling, outcome: 1.5 Kommunikation.

Figure 7 (Analysis 1.6)



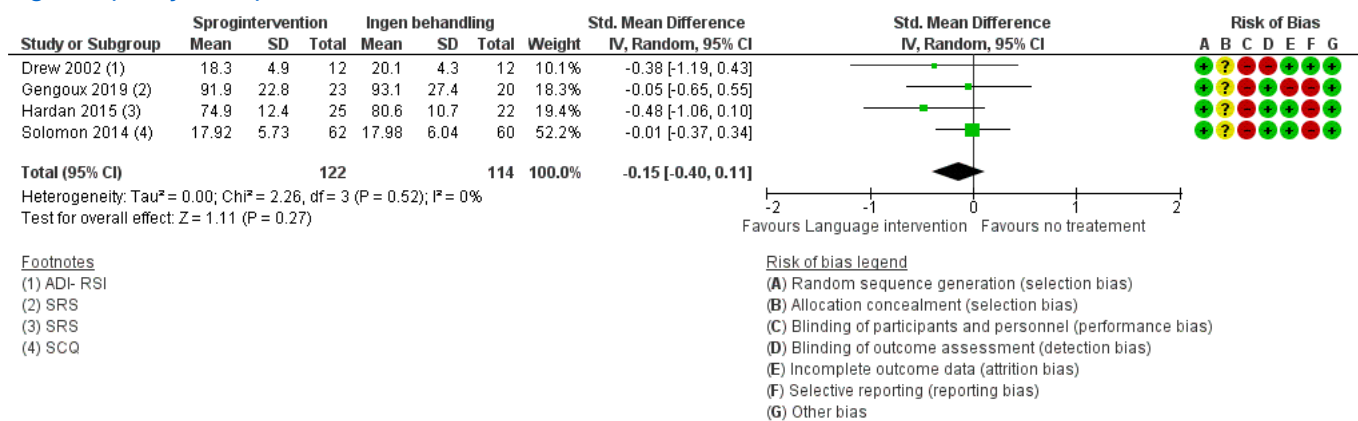
Forest plot of comparison: 1 Sprogintervention vs ingen behandling, outcome: 1.6 Funktionsniveau, klinikerbedømt.

Figure 8 (Analysis 1.7)



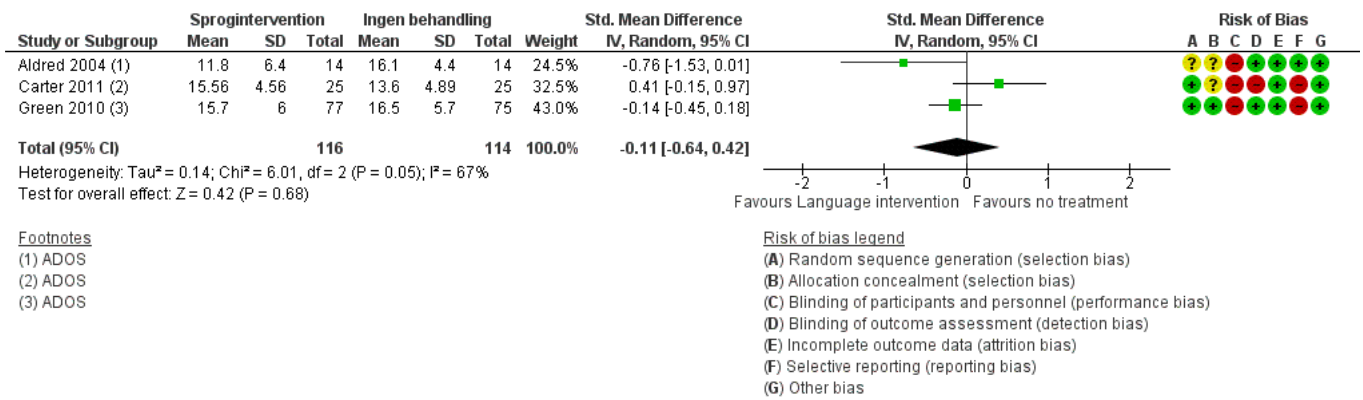
Forest plot of comparison: 1 Sprogintervention vs ingen behandling, outcome: 1.7 Funktionsniveau, forældrebedømt.

Figure 9 (Analysis 1.8)



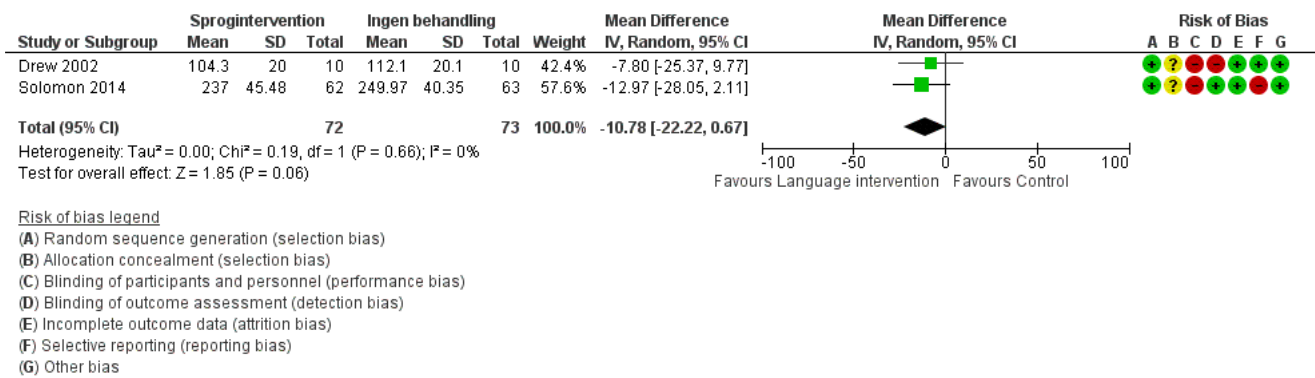
Forest plot of comparison: 1 Sprogintervention vs ingen behandling, outcome: 1.8 Kernesymptomer autisme, forældrerapporteret.

Figure 10 (Analysis 1.9)



Forest plot of comparison: 1 Sprogintervention vs ingen behandling, outcome: 1.9 Kernesymptomer autisme, klinikerbedømt.

Figure 11 (Analysis 1.10)



Forest plot of comparison: 1 Sprogintervention vs ingen behandling, outcome: 1.10 Forældretrivsel, PSI.